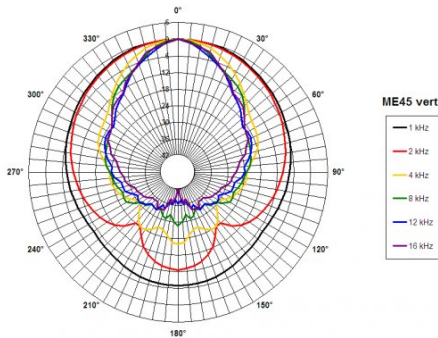
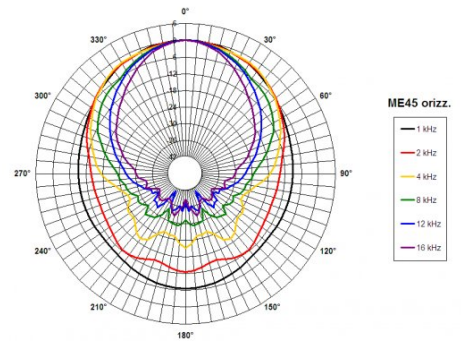
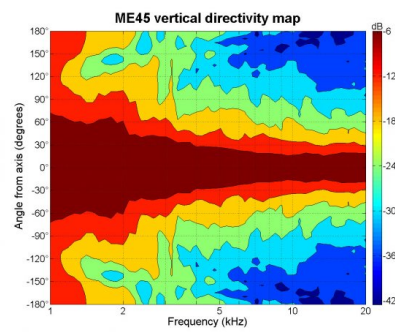
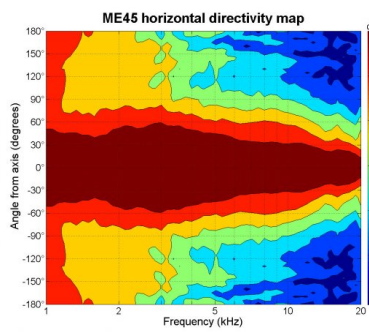


- 1" throat entry
- 90° x 40° nominal coverage
- Exponential flare
- Excellent loading down to 1 kHz



SPECIFICATIONS

Horn mounted on B&C DE 750 compression driver.

Throat Diameter 25 mm (1 in)

Nominal Coverage Horizontal 90 °

Nominal Coverage Vertical 40 °

Cutoff Frequency 1 kHz

Material Cast Aluminium

Dimensions 310x140x124 mm
(12.2x5.6x4.9 in)

MOUNTING AND SHIPPING INFO

Other details 2x 6.5 mm (0.255 in) holes
180° on 76 mm (3 in) diameter

Baffle Cutout Dimension 260 mm (10.2 in)

Air Volume Occupied by Driver 0.26 dm³ (0.01 ft³)

Net Weight 0.86 kg (1.9 lb)

Shipping Units 1 pcs

Shipping Weight 0.96 kg (2.12 lb)

Shipping Box 320x150x125 mm
(12.60x5.91x4.92 in)