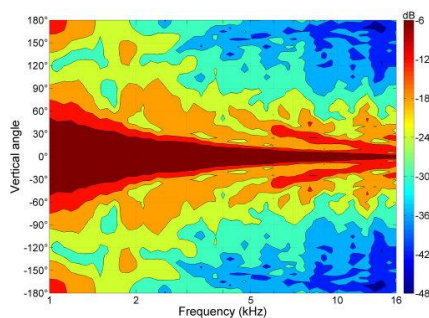
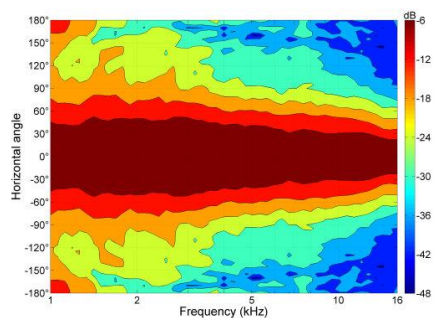
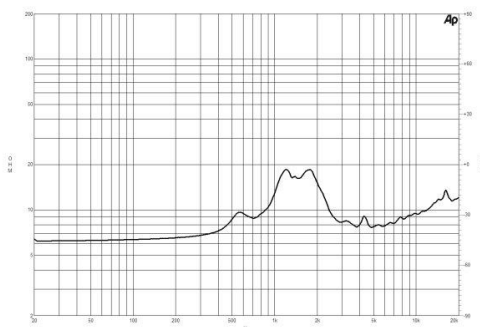
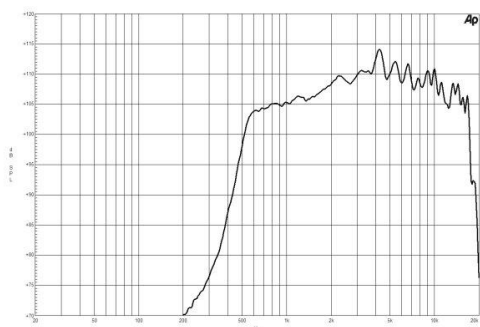


- Line Array optimized Waveguide with DE400 driver
- 140° max horizontal coverage
- 100 W continuous program power capacity
- 44 mm (1.7 in) aluminium voice coil
- Polyimide diaphragm
- 1200 - 18000 Hz response
- 108.5 dB sensitivity
- Compact Neodymium magnet assembly



## SPECIFICATIONS HORN UNIT

Waveguide mounted on 90°x10° bell horn

Nominal Impedance	8 Ω
Active Radiating Factor	92.5 %
Horizontal Coverage	140 ° Max

## SERVICE KITS

HF replacement-diaphragm	MMD4008
--------------------------	---------

## SPECIFICATIONS HF UNIT

Minimum Impedance	7.7 Ω
Nominal Power Handling	50 W <small>2 hour test made with continuous pink noise signal (6 dB crest factor) within the range from the recommended crossover frequency to 20 kHz. Power calculated on rated minimum impedance.</small>
Continuous Power Handling	100 W <small>Power on Continuous Program is defined as 3 dB greater than the Nominal rating.</small>
Sensitivity	108.5 dB <small>Applied RMS Voltage is set to 2.83 V for 8 ohms Nominal Impedance.</small>
Frequency Range	1.2 kHz - 18 kHz
Recommended Crossover	1.5 kHz <small>12 dB/oct. Or higher slope high-pass filter.</small>
Voice Coil Diameter	44 mm (1.7 in)
Winding Material	Aluminium
Flux Density	1.8 T
Diaphragm Material	Polyimide

## MOUNTING AND SHIPPING INFO

Exit Size	102x25 mm (4x1 in)
Net Weight	1.98 kg (4.35 lb)
Shipping Units	1 pcs
Shipping Weight	2.13 kg (4.68 lb)
Shipping Box	175x115x90 mm (6.89x4.53x3.54 in)
Driver Diameter	86 mm (3.3 in)
Dimensions	111x87x155 mm (4.4x3.5x6.1 in)