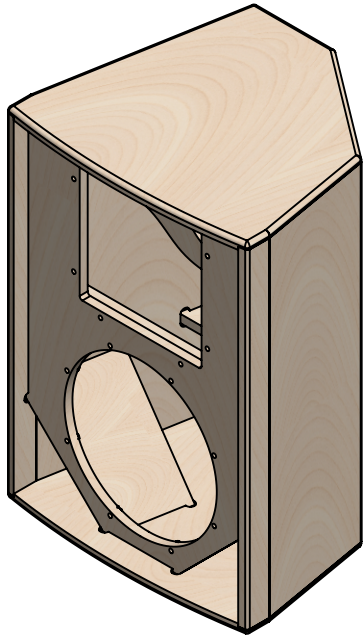
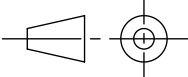


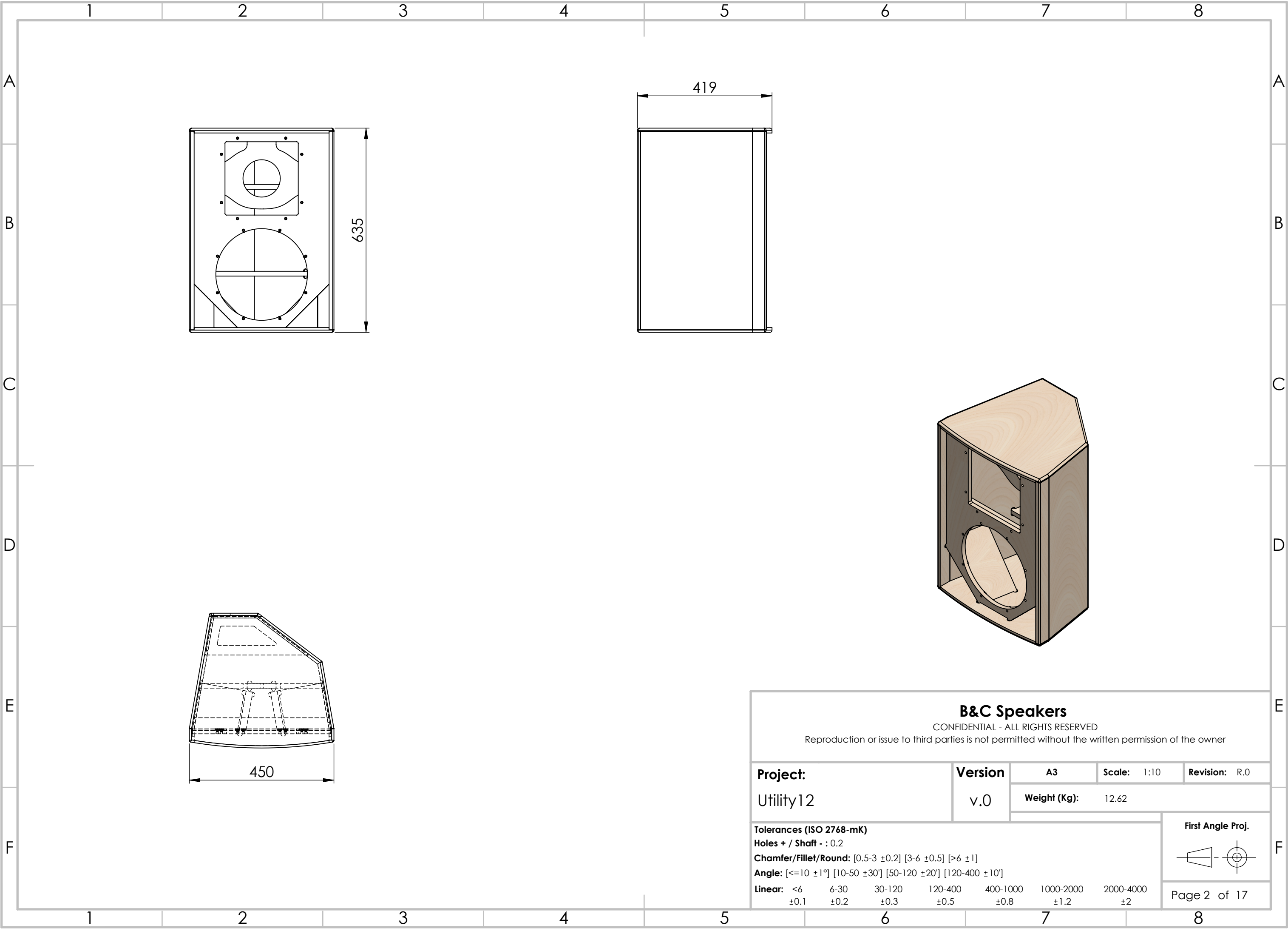


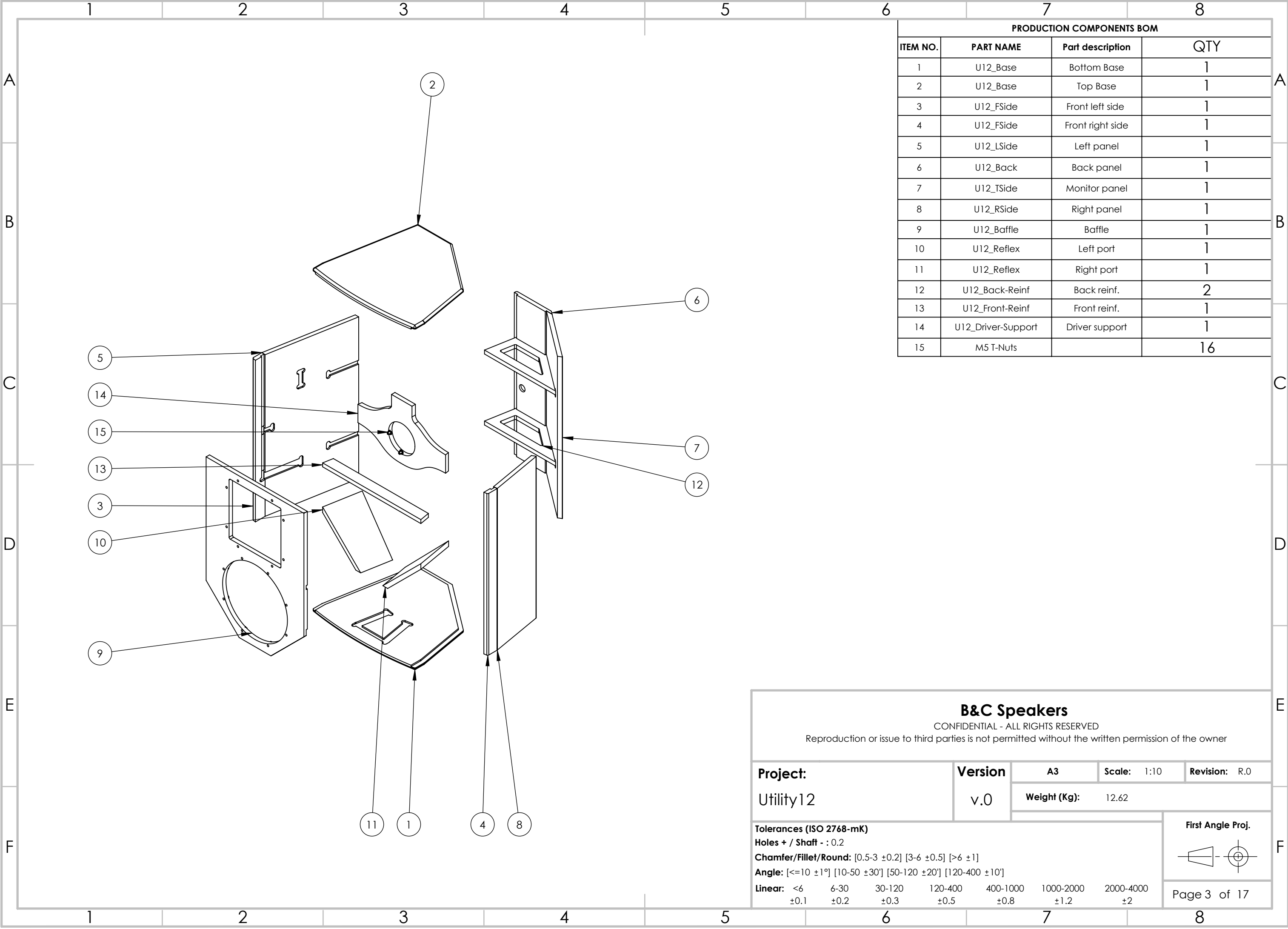
Utility12

Multipurpose point-source



B&C Speakers																					
CONFIDENTIAL - ALL RIGHTS RESERVED																					
Reproduction or issue to third parties is not permitted without the written permission of the owner																					
Project: Utility12		Version v.0	A3	Scale: 1:10	Revision: R.0																
			Weight (Kg): 12.62																		
Tolerances (ISO 2768-mK) Holes + / Shaft - : 0.2 Chamfer/Fillet/Round: [0.5-3 ±0.2] [3-6 ±0.5] [>6 ±1] Angle: [<=10 ±1°] [10-50 ±30°] [50-120 ±20°] [120-400 ±10°] Linear: <table><tr><td><6</td><td>6-30</td><td>30-120</td><td>120-400</td><td>400-1000</td><td>1000-2000</td><td>2000-4000</td></tr><tr><td>±0.1</td><td>±0.2</td><td>±0.3</td><td>±0.5</td><td>±0.8</td><td>±1.2</td><td>±2</td></tr></table>						<6	6-30	30-120	120-400	400-1000	1000-2000	2000-4000	±0.1	±0.2	±0.3	±0.5	±0.8	±1.2	±2	First Angle Proj. 	
						<6	6-30	30-120	120-400	400-1000	1000-2000	2000-4000									
						±0.1	±0.2	±0.3	±0.5	±0.8	±1.2	±2									
						Page 1 of 17															





PRODUCTION COMPONENTS BOM			
ITEM NO.	PART NAME	Part description	QTY
1	U12_Base	Bottom Base	1
2	U12_Base	Top Base	1
3	U12_FSide	Front left side	1
4	U12_FSide	Front right side	1
5	U12_LSide	Left panel	1
6	U12_Back	Back panel	1
7	U12_TSide	Monitor panel	1
8	U12_RSide	Right panel	1
9	U12_Baffle	Baffle	1
10	U12_Reflex	Left port	1
11	U12_Reflex	Right port	1
12	U12_Back-Reinf	Back reinf.	2
13	U12_Front-Reinf	Front reinf.	1
14	U12_Driver-Support	Driver support	1
15	M5 T-Nuts		16

B&C Speakers

CONFIDENTIAL - ALL RIGHTS RESERVED

Reproduction or issue to third parties is not permitted without the written permission of the owner

Project:	Version	A3	Scale: 1:10	Revision: R.0
Utility12	v.0	Weight (Kg): 12.62		

Tolerances (ISO 2768-mK)

Holes + / Shaft - : 0.2

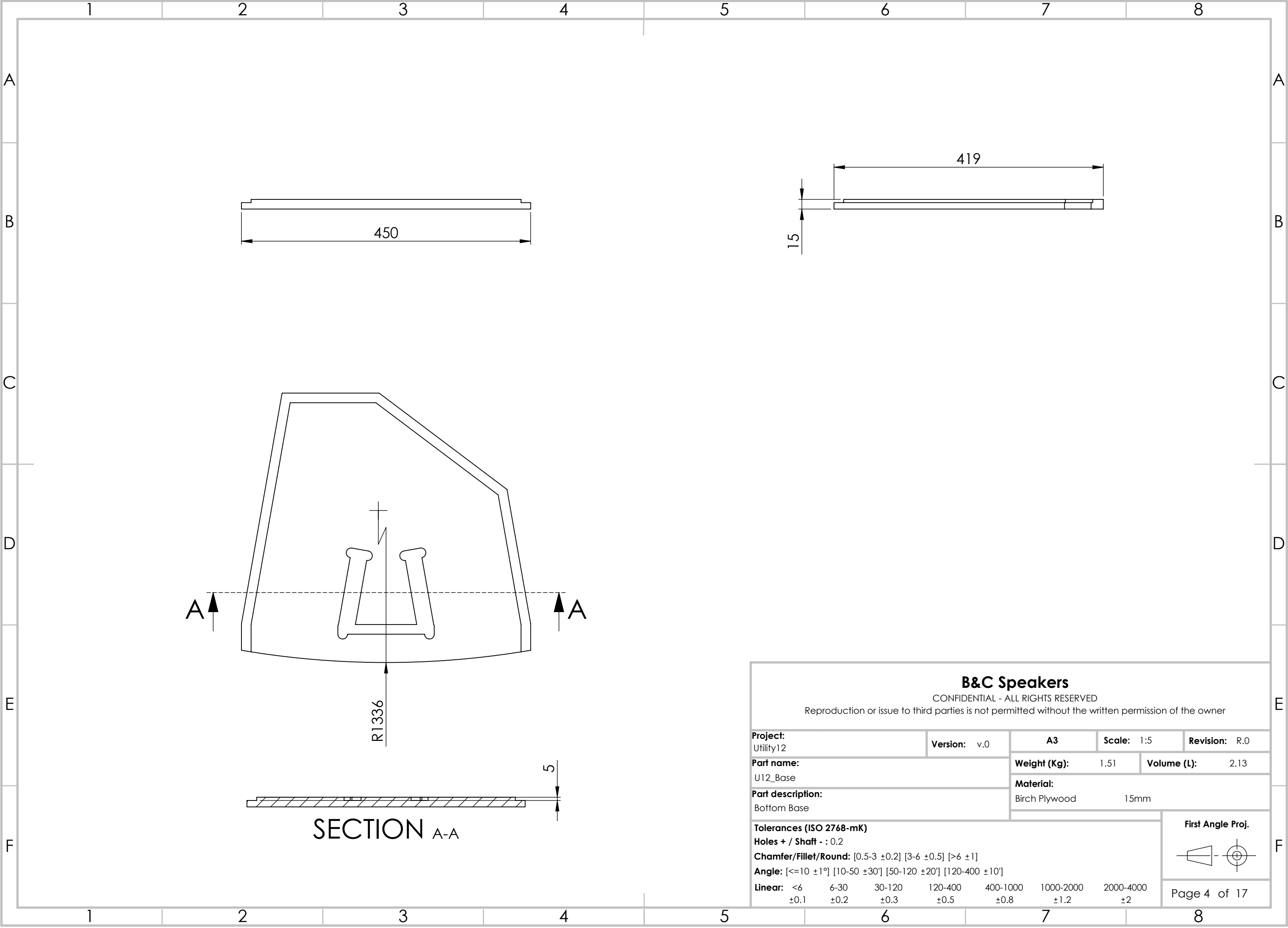
Chamfer/Fillet/Round: [0.5-3 ±0.2] [3-6 ±0.5] [>6 ±1]

Angle: [<=10 ±1°] [10-50 ±30'] [50-120 ±20'] [120-400 ±10']

Linear: <6 ±0.1 6-30 ±0.2 30-120 ±0.3 120-400 ±0.5 400-1000 ±0.8 1000-2000 ±1.2 2000-4000 ±2

First Angle Proj.

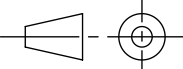
Page 3 of 17

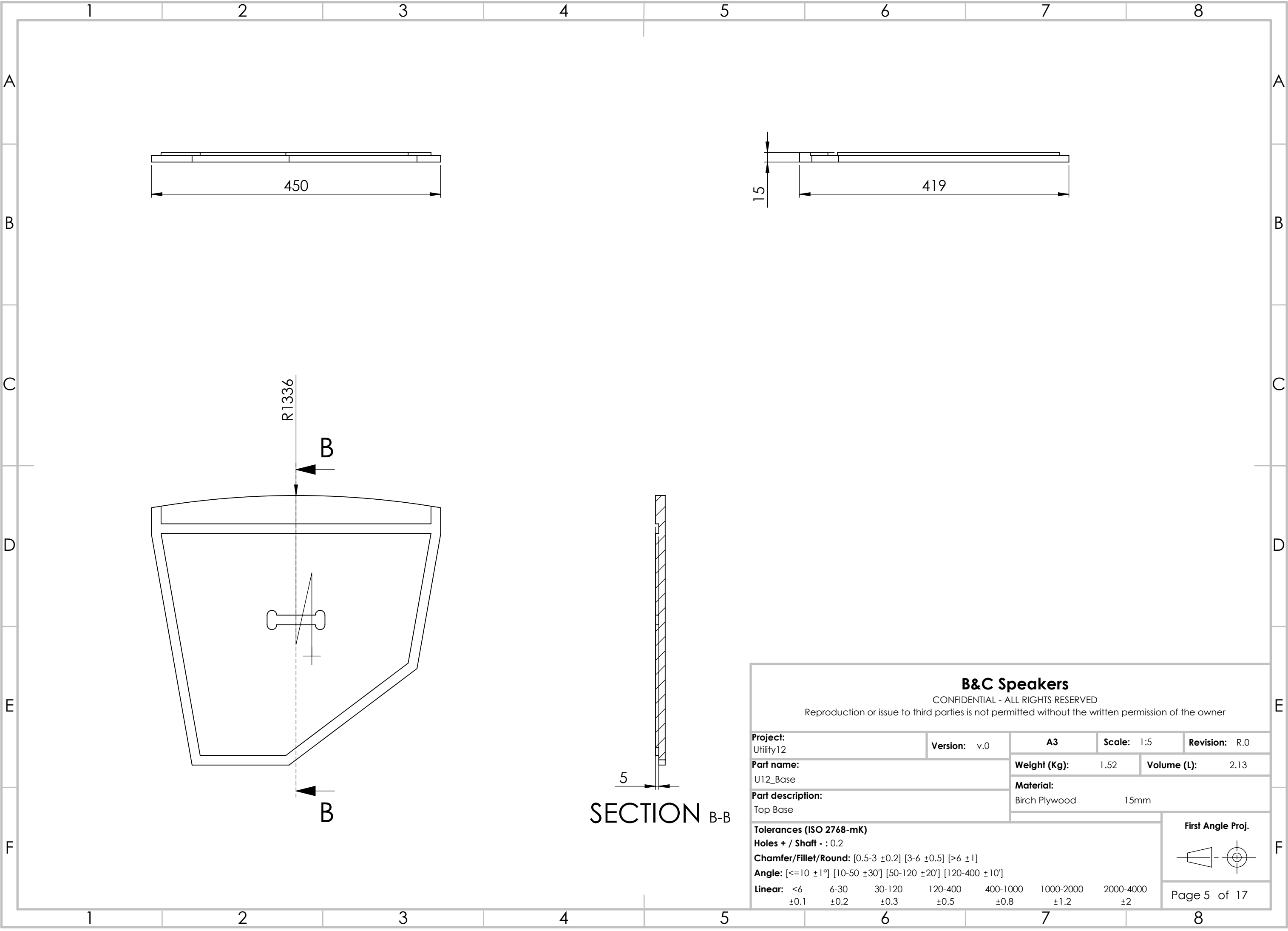


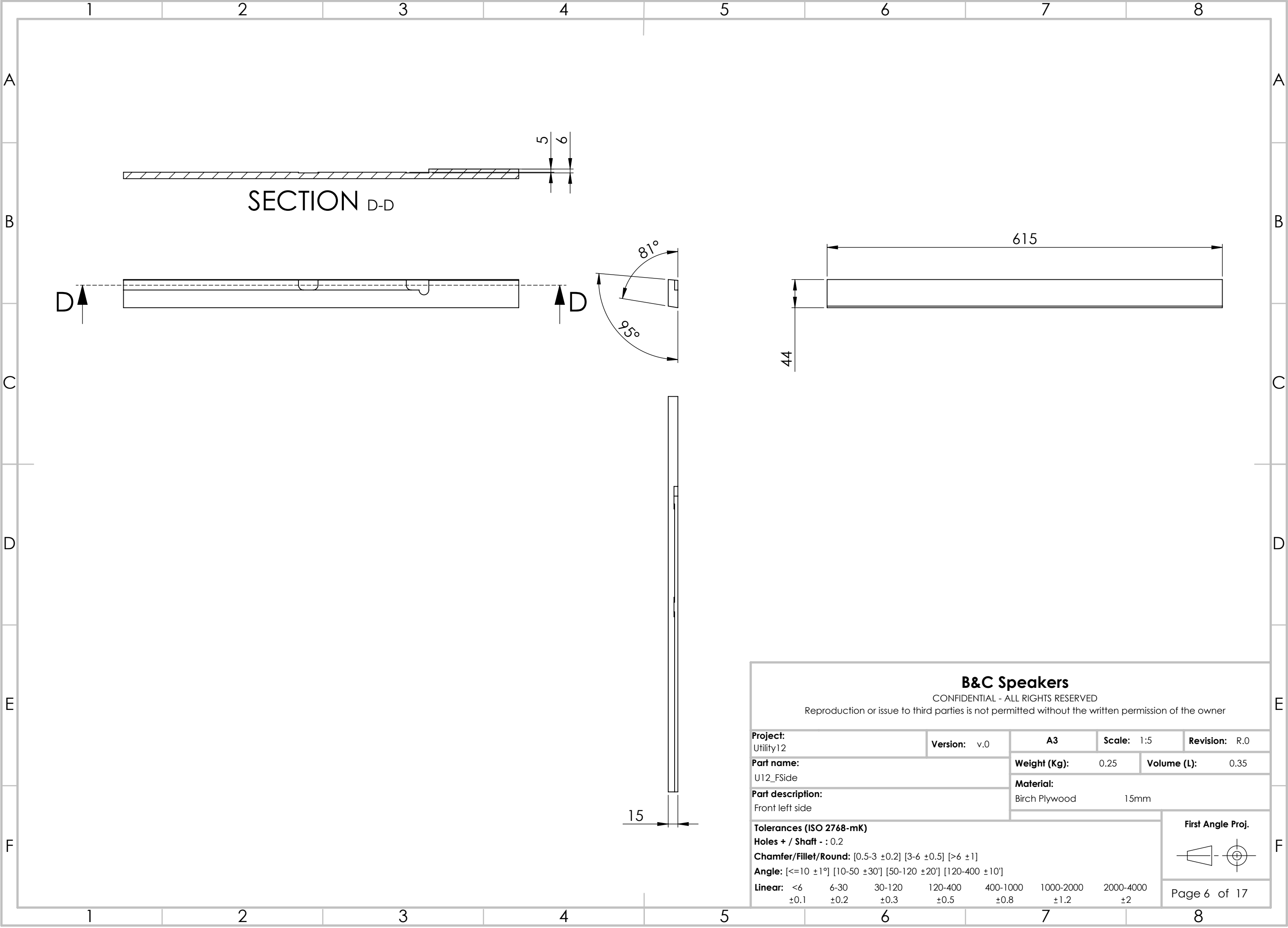
B&C Speakers

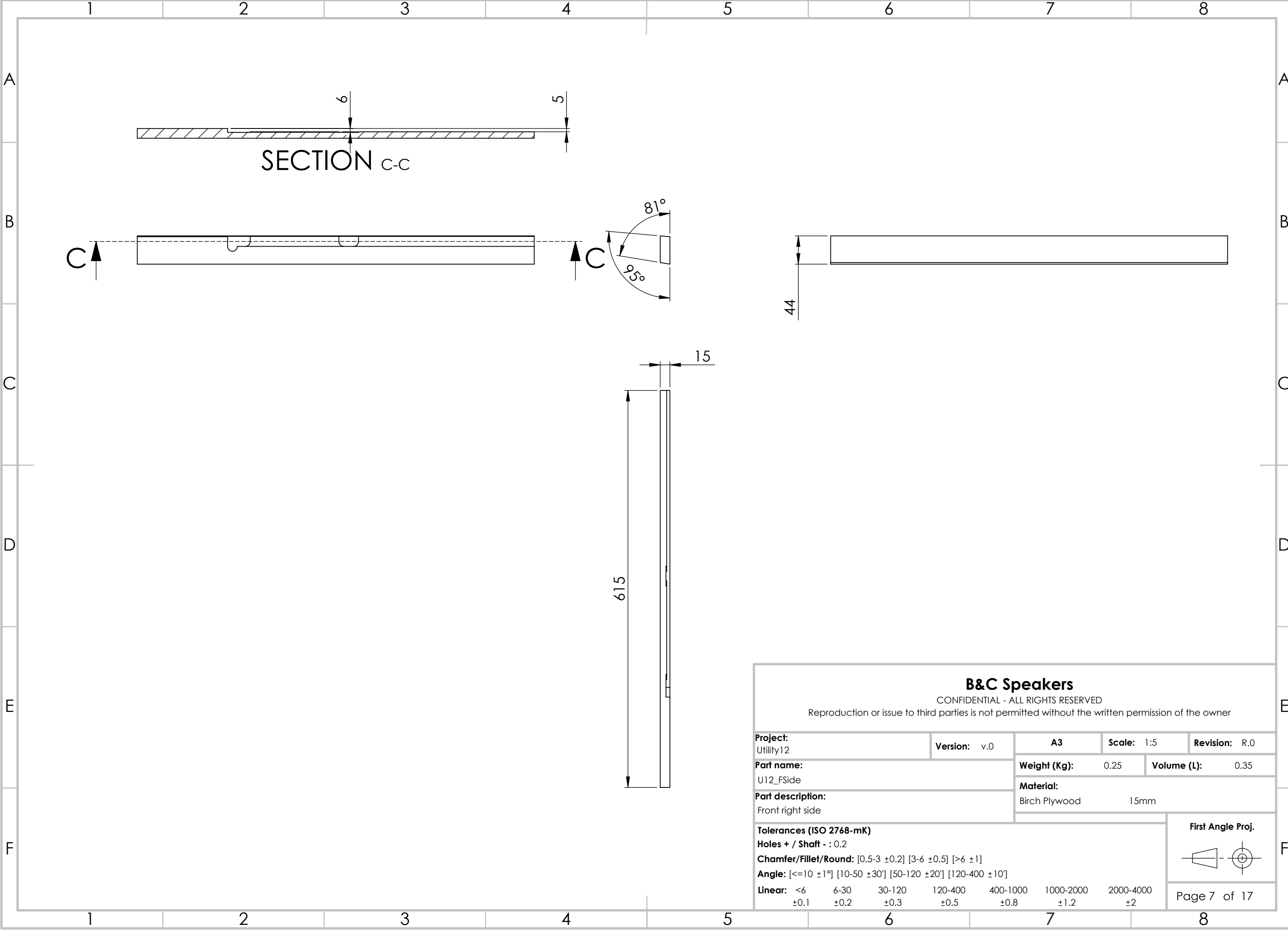
CONFIDENTIAL - ALL RIGHTS RESERVED

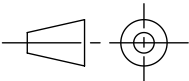
Reproduction or issue to third parties is not permitted without the written permission of the owner

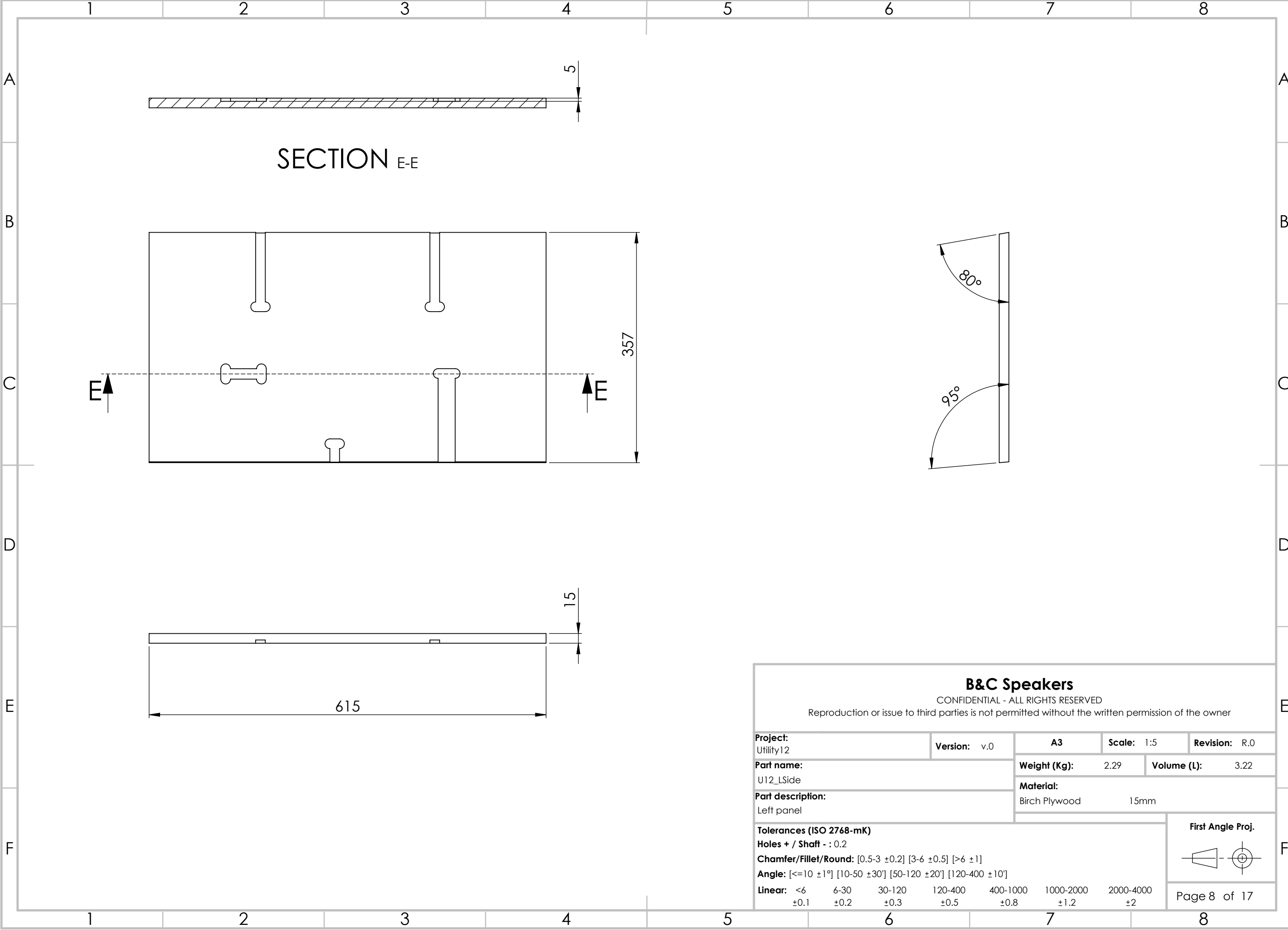
Project: Utility12			Version: v.0		A3	Scale: 1:5		Revision: R.0	
Part name: U12_Base					Weight (Kg): 1.51		Volume (L): 2.13		
Part description: Bottom Base					Material: Birch Plywood 15mm				
Tolerances (ISO 2768-mK) Holes + / Shaft - : 0.2 Chamfer/Fillet/Round: [0.5-3 ±0.2] [3-6 ±0.5] [>6 ±1] Angle: [<=10 ±1°] [10-50 ±30°] [50-120 ±20°] [120-400 ±10°] Linear: <6 6-30 30-120 120-400 400-1000 1000-2000 2000-4000 ±0.1 ±0.2 ±0.3 ±0.5 ±0.8 ±1.2 ±2					First Angle Proj. 				
					Page 4 of 17				







B&C Speakers							
CONFIDENTIAL - ALL RIGHTS RESERVED							
Reproduction or issue to third parties is not permitted without the written permission of the owner							
Project: Utility12		Version: v.0		A3	Scale: 1:5		Revision: R.0
Part name: U12_FSide				Weight (Kg): 0.25		Volume (L): 0.35	
Part description: Front right side				Material: Birch Plywood 15mm			
Tolerances (ISO 2768-mK)						<div>First Angle Proj.</div> <div></div>	
Holes + / Shaft - : 0.2							
Chamfer/Fillet/Round: [0.5-3 ±0.2] [3-6 ±0.5] [>6 ±1]							
Angle: [<=10 ±1°] [10-50 ±30°] [50-120 ±20°] [120-400 ±10°]						Page 7 of 17	
Linear: <6 6-30 30-120 120-400 400-1000 1000-2000 2000-4000 ±0.1 ±0.2 ±0.3 ±0.5 ±0.8 ±1.2 ±2							

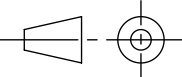


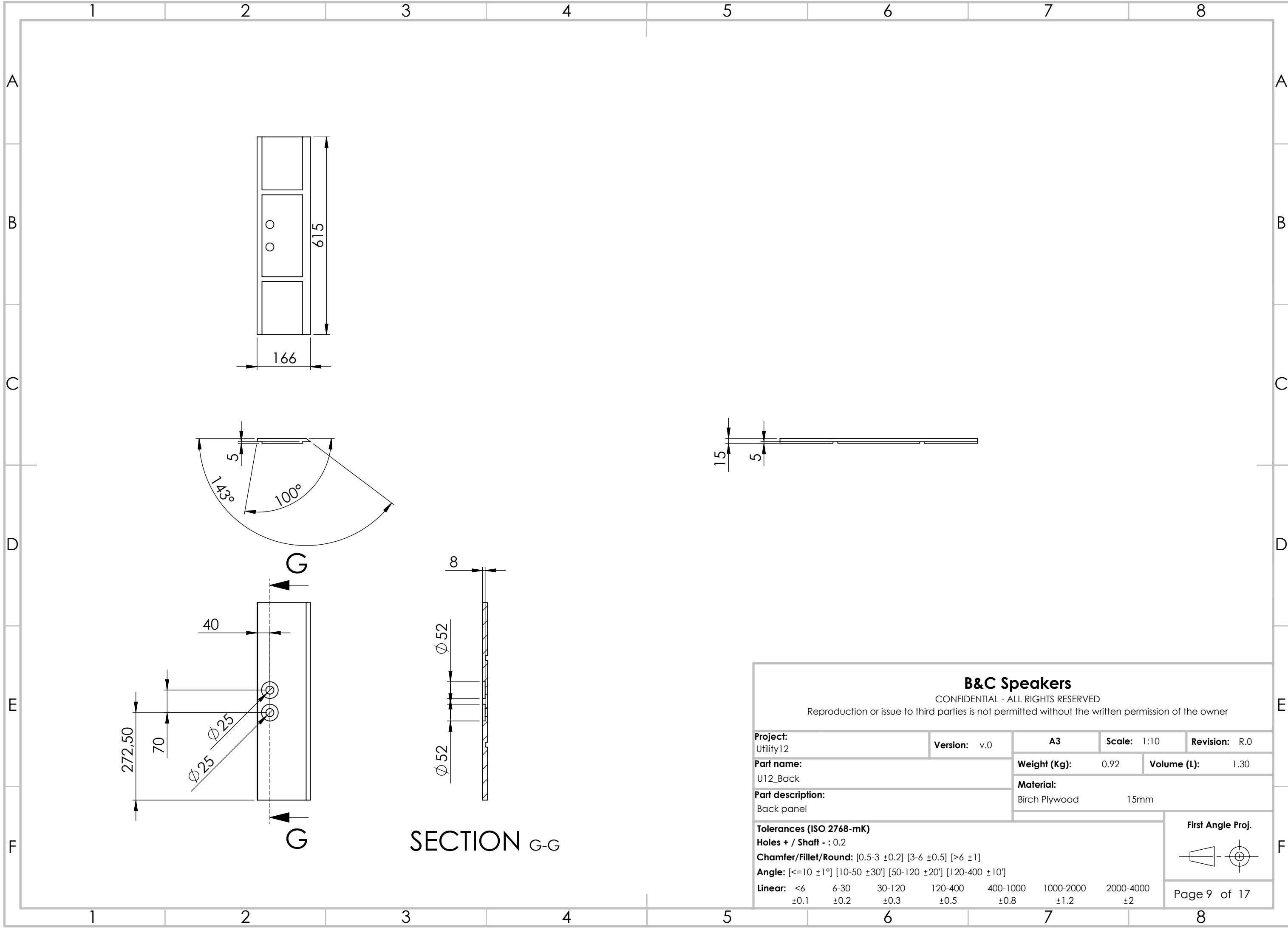
SECTION E-E

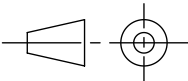
B&C Speakers

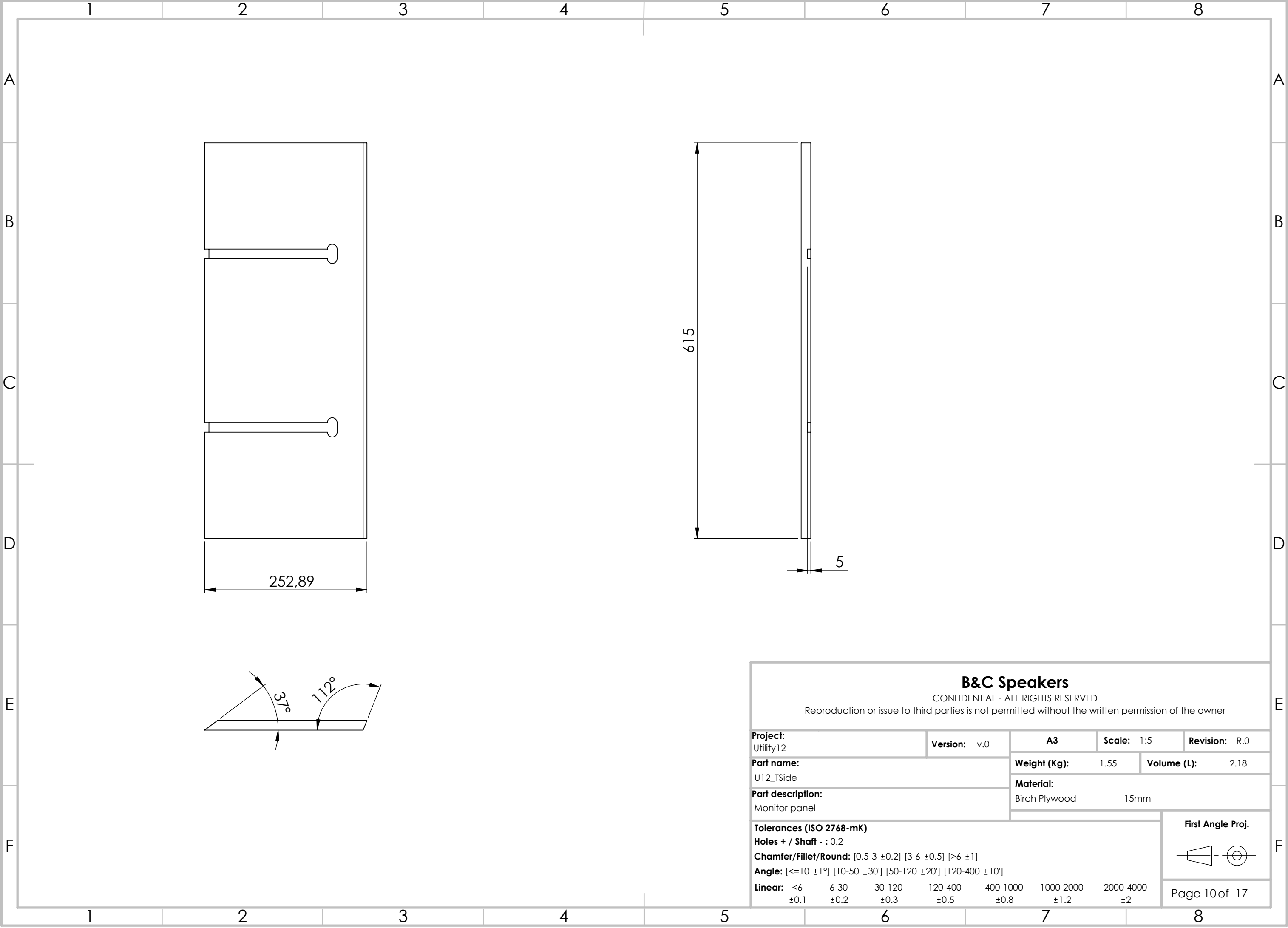
CONFIDENTIAL - ALL RIGHTS RESERVED

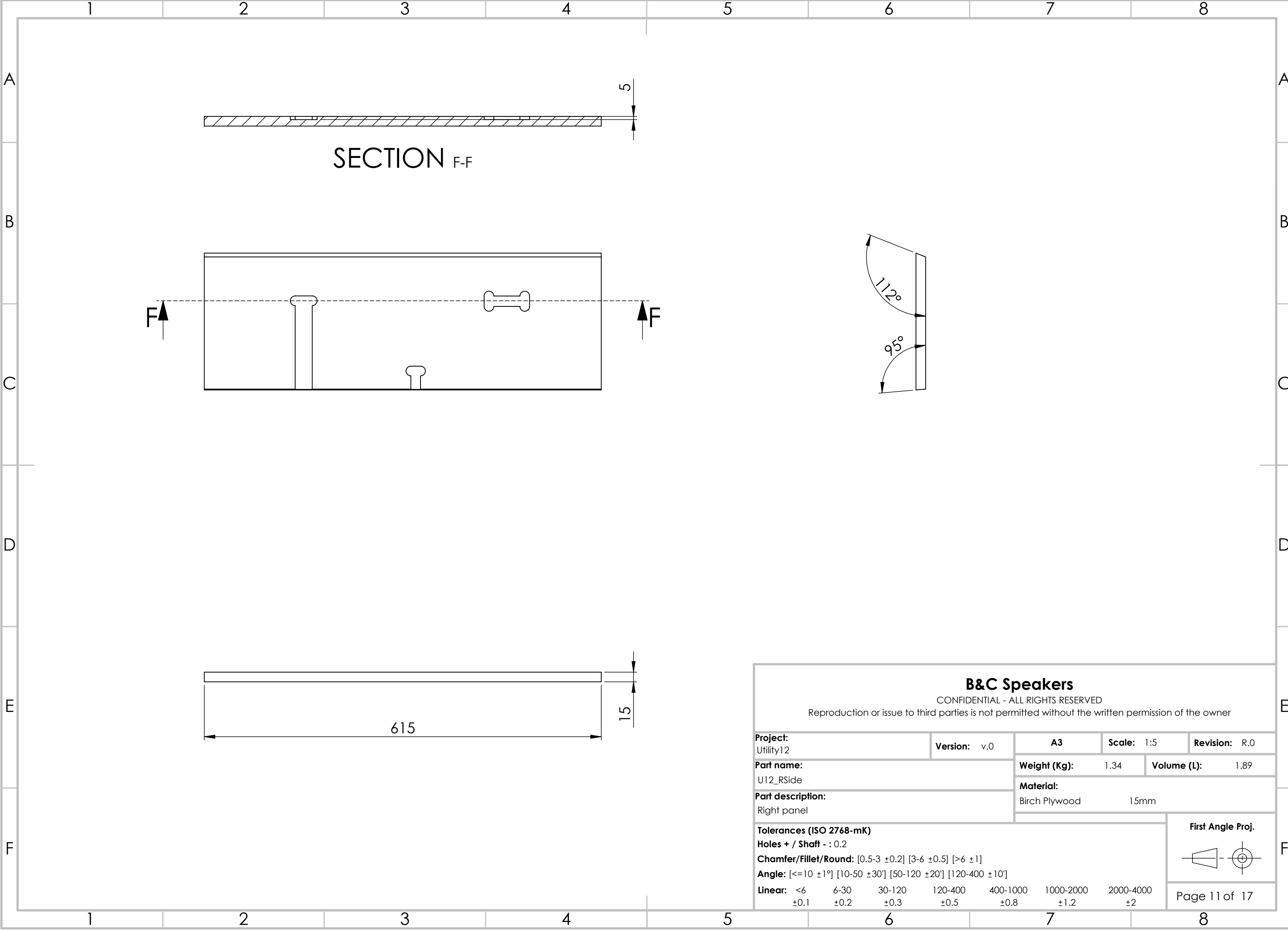
Reproduction or issue to third parties is not permitted without the written permission of the owner

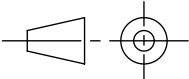
Project: Utility12			Version: v.0		A3		Scale: 1:5		Revision: R.0		
Part name: U12_LSide					Weight (Kg): 2.29		Volume (L): 3.22				
Part description: Left panel					Material: Birch Plywood 15mm						
Tolerances (ISO 2768-mK) Holes + / Shaft - : 0.2 Chamfer/Fillet/Round: [0.5-3 ±0.2] [3-6 ±0.5] [>6 ±1] Angle: [<=10 ±1°] [10-50 ±30'] [50-120 ±20'] [120-400 ±10'] Linear: <6 ±0.1 6-30 ±0.2 30-120 ±0.3 120-400 ±0.5 400-1000 ±0.8 1000-2000 ±1.2 2000-4000 ±2								First Angle Proj. 			
Page 8 of 17											

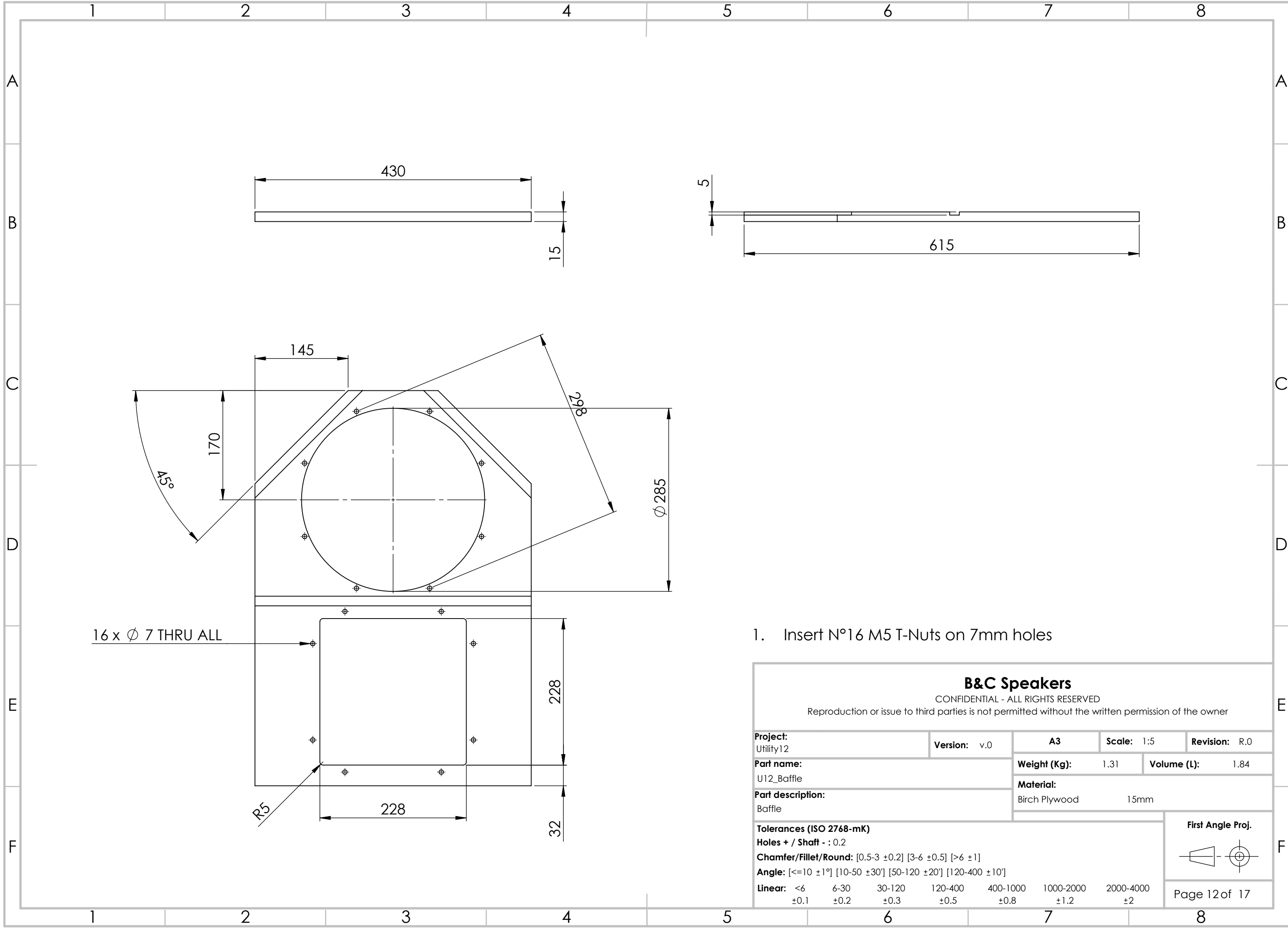


B&C Speakers							
CONFIDENTIAL - ALL RIGHTS RESERVED							
Reproduction or issue to third parties is not permitted without the written permission of the owner							
Project: Utility12		Version: v.0		A3	Scale: 1:10		Revision: R.0
Part name: U12_Back				Weight (Kg): 0.92		Volume (L): 1.30	
Part description: Back panel				Material: Birch Plywood 15mm			
Tolerances (ISO 2768-mK)						First Angle Proj.	
Holes + / Shaft - : 0.2							
Chamfer/Fillet/Round: [0.5-3 ±0.2] [3-6 ±0.5] [>6 ±1]							
Angle: [<=10 ±1°] [10-50 ±30°] [50-120 ±20°] [120-400 ±10°]							
Linear: <6 ±0.1		6-30 ±0.2	30-120 ±0.3	120-400 ±0.5	400-1000 ±0.8	1000-2000 ±1.2	2000-4000 ±2
						Page 9 of 17	

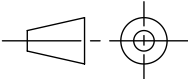


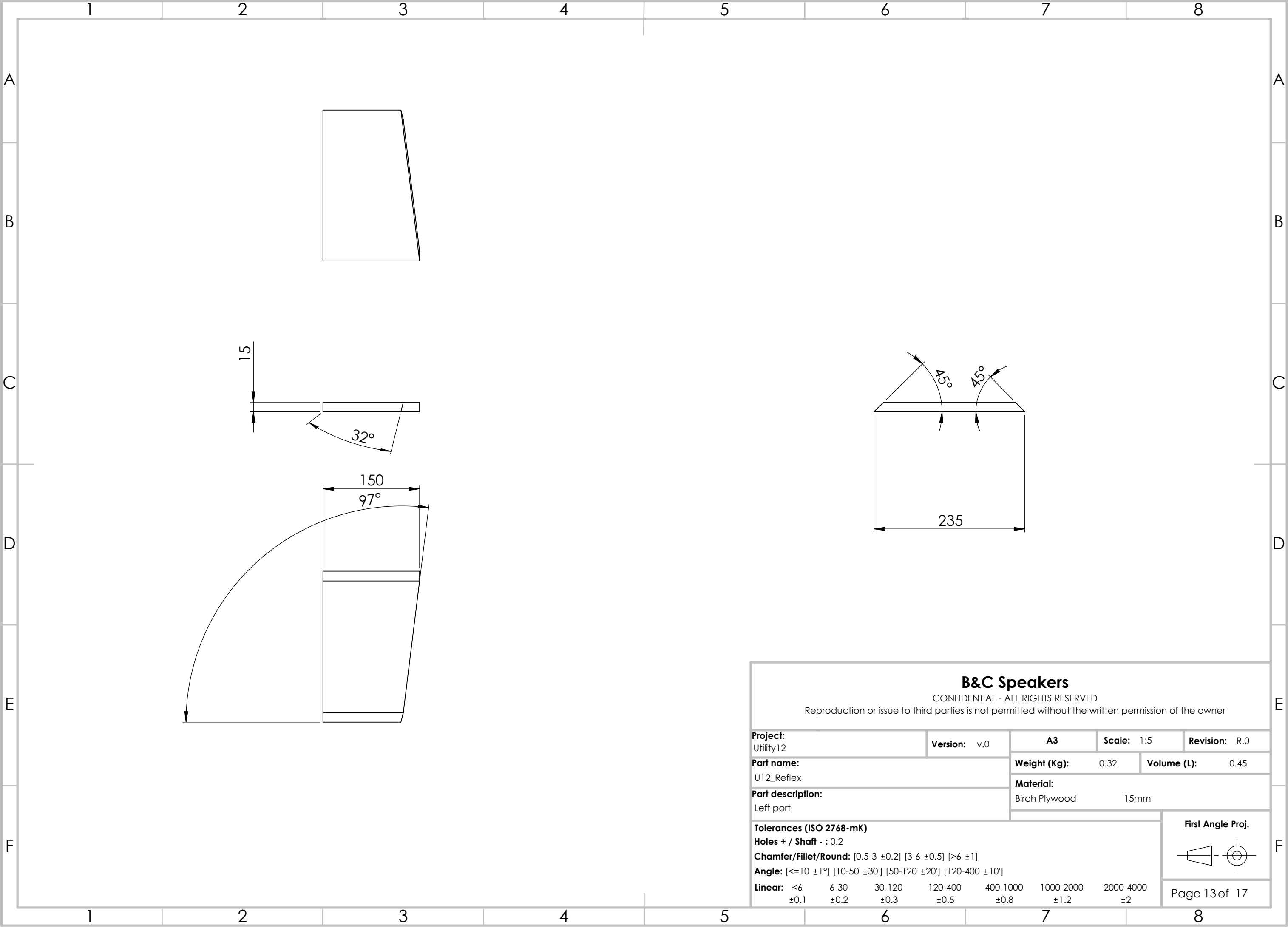


B&C Speakers							
CONFIDENTIAL - ALL RIGHTS RESERVED							
Reproduction or issue to third parties is not permitted without the written permission of the owner							
Project: Utility12		Version: v.0		A3	Scale: 1:5		Revision: R.0
Part name: U12_RSide				Weight (Kg): 1.34		Volume (L): 1.89	
Part description: Right panel				Material: Birch Plywood 15mm			
Tolerances (ISO 2768-mK)						<div>First Angle Proj.</div> <div></div>	
Holes + / Shaft - : 0.2							
Chamfer/Fillet/Round: [0.5-3 ±0.2] [3-6 ±0.5] [>6 ±1]							
Angle: [<=10 ±1°] [10-50 ±30°] [50-120 ±20°] [120-400 ±10°]						Page 11 of 17	
Linear: <6 6-30 30-120 120-400 400-1000 1000-2000 2000-4000 ±0.1 ±0.2 ±0.3 ±0.5 ±0.8 ±1.2 ±2							



1. Insert N°16 M5 T-Nuts on 7mm holes

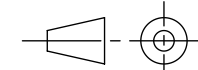
B&C Speakers								
CONFIDENTIAL - ALL RIGHTS RESERVED								
Reproduction or issue to third parties is not permitted without the written permission of the owner								
Project: Utility12		Version: v.0		A3	Scale: 1:5	Revision: R.0		
Part name: U12_Baffle				Weight (Kg): 1.31		Volume (L): 1.84		
Part description: Baffle				Material: Birch Plywood 15mm				
Tolerances (ISO 2768-mK)						First Angle Proj. 		
Holes + / Shaft - : 0.2								
Chamfer/Fillet/Round: [0.5-3 ±0.2] [3-6 ±0.5] [>6 ±1]								
Angle: [<=10 ±1°] [10-50 ±30°] [50-120 ±20°] [120-400 ±10°]						Page 12 of 17		
Linear: <6		6-30	30-120	120-400	400-1000		1000-2000	2000-4000
±0.1		±0.2	±0.3	±0.5	±0.8		±1.2	±2

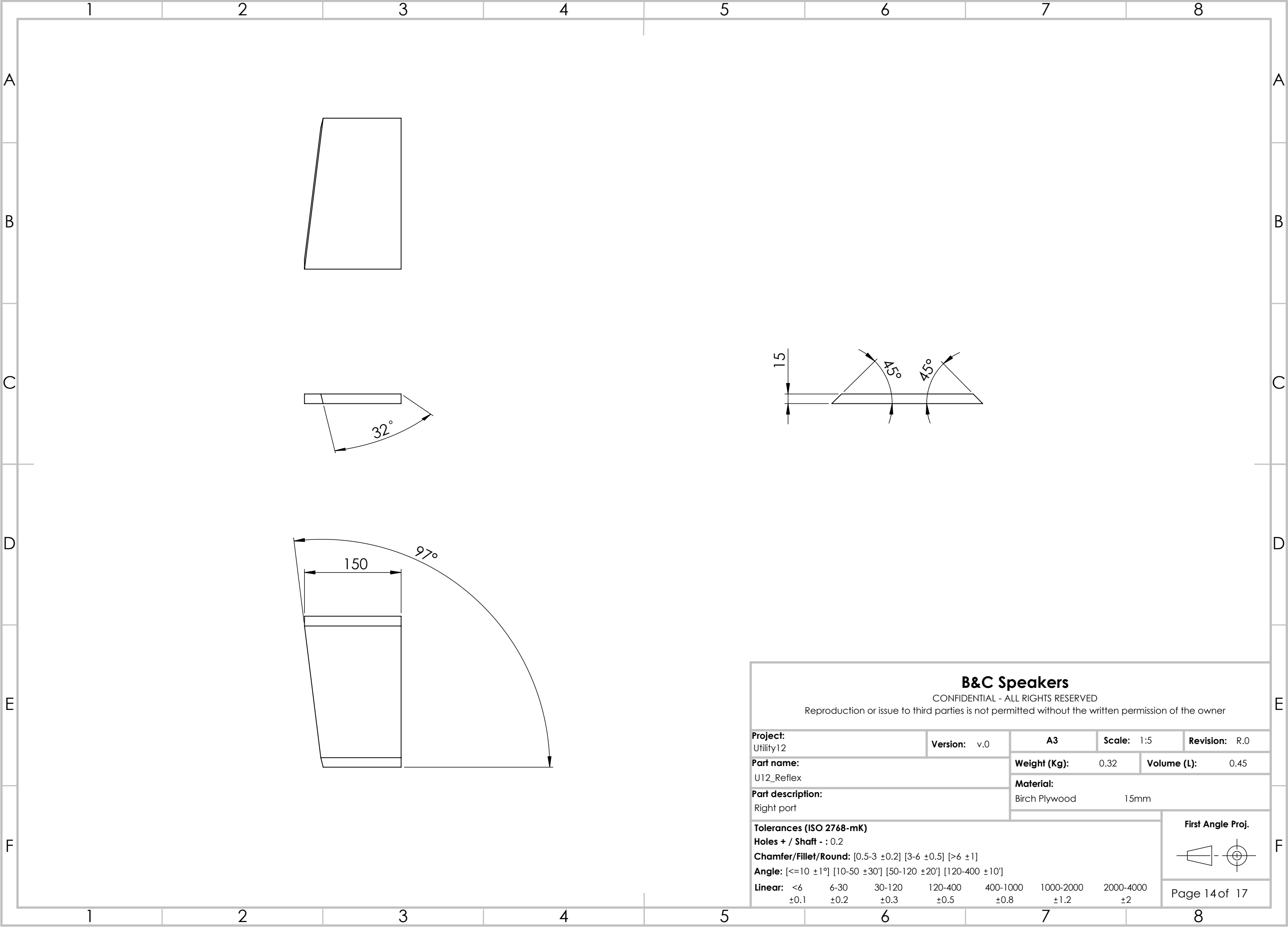


B&C Speakers

CONFIDENTIAL - ALL RIGHTS RESERVED

Reproduction or issue to third parties is not permitted without the written permission of the owner

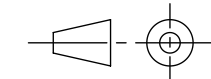
Project: Utility12				Version: v.0		A3		Scale: 1:5		Revision: R.0	
Part name: U12_Reflex						Weight (Kg): 0.32		Volume (L): 0.45			
Part description: Left port						Material: Birch Plywood 15mm					
Tolerances (ISO 2768-mK) Holes + / Shaft - : 0.2 Chamfer/Fillet/Round: [0.5-3 ±0.2] [3-6 ±0.5] [>6 ±1] Angle: [<=10 ±1°] [10-50 ±30°] [50-120 ±20°] [120-400 ±10°] Linear: <6 ±0.1 6-30 ±0.2 30-120 ±0.3 120-400 ±0.5 400-1000 ±0.8 1000-2000 ±1.2 2000-4000 ±2										First Angle Proj. 	
Page 13 of 17											

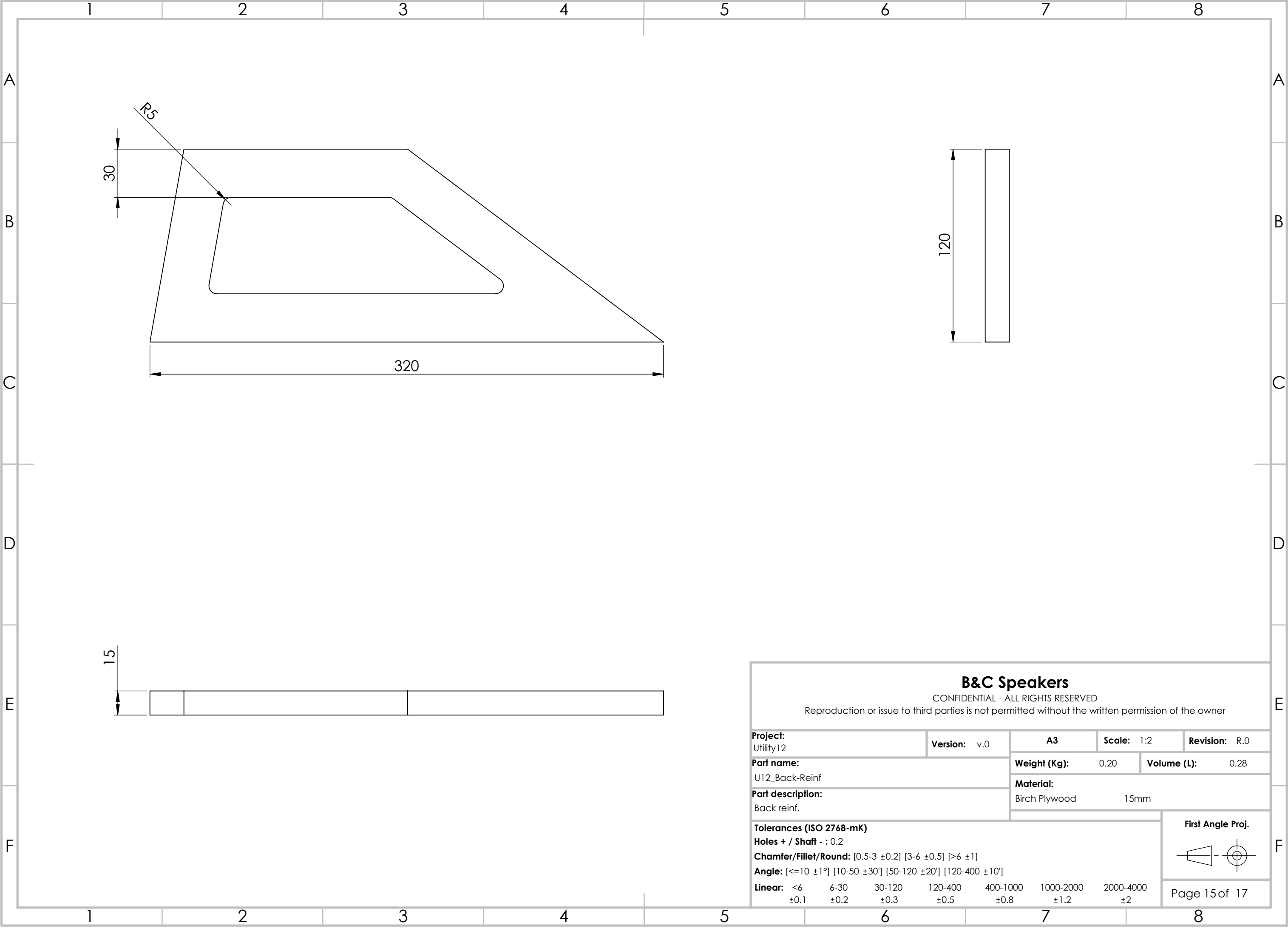


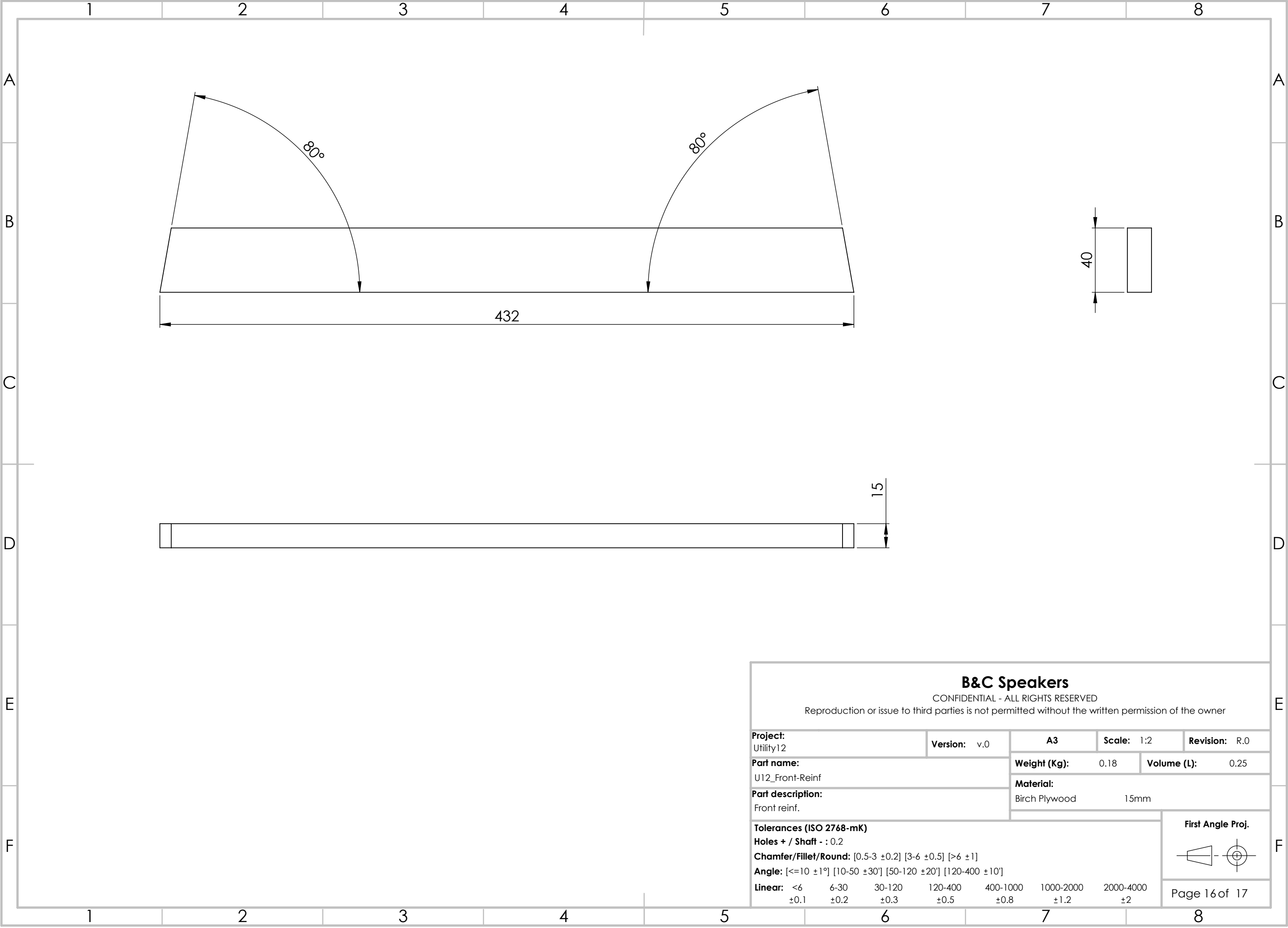
B&C Speakers

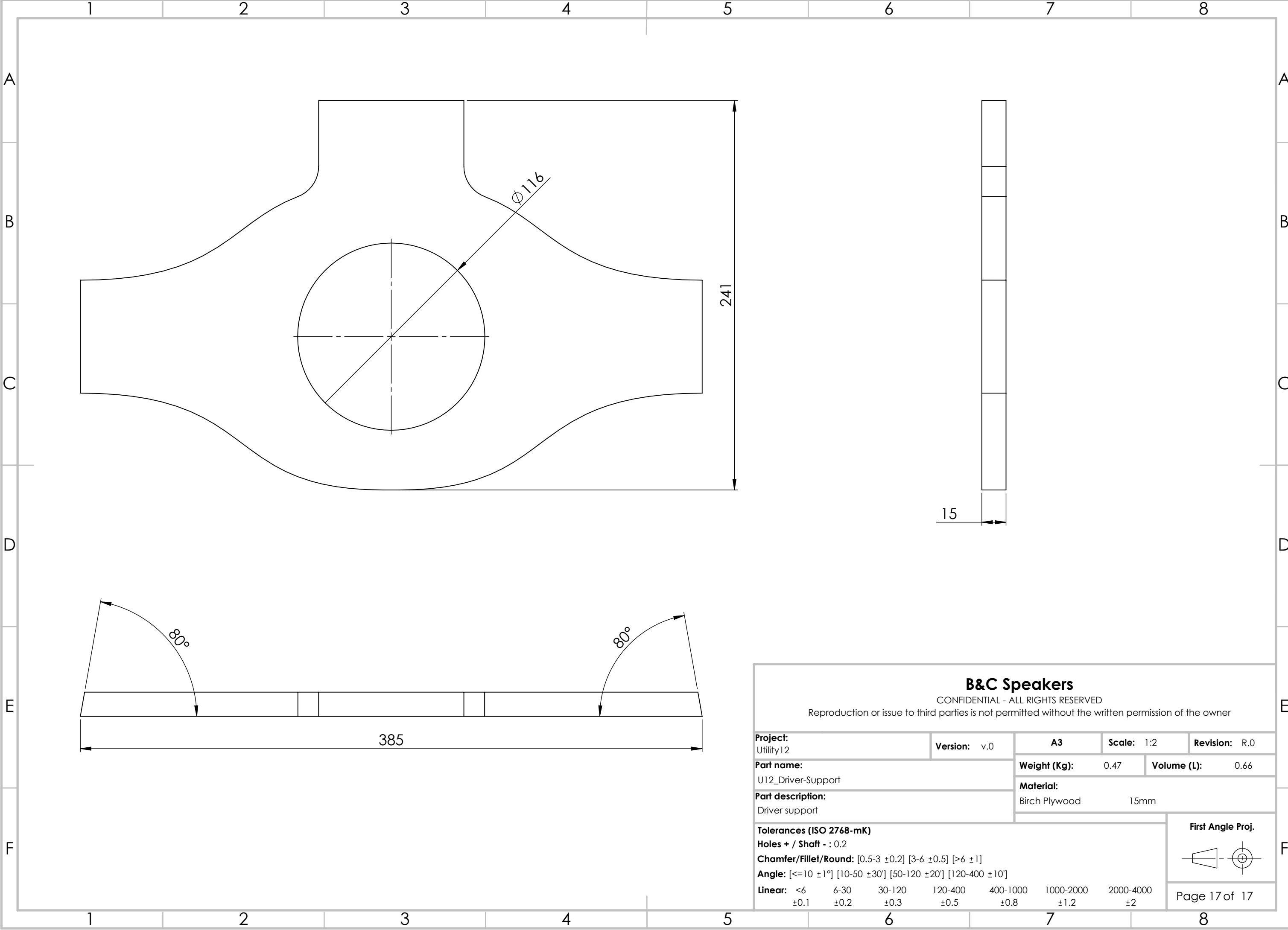
CONFIDENTIAL - ALL RIGHTS RESERVED

Reproduction or issue to third parties is not permitted without the written permission of the owner

Project: Utility12			Version: v.0		A3		Scale: 1:5		Revision: R.0		
Part name: U12_Reflex					Weight (Kg): 0.32		Volume (L): 0.45				
Part description: Right port					Material: Birch Plywood 15mm						
Tolerances (ISO 2768-mK) Holes + / Shaft - : 0.2 Chamfer/Fillet/Round: [0.5-3 ±0.2] [3-6 ±0.5] [>6 ±1] Angle: [<=10 ±1°] [10-50 ±30'] [50-120 ±20'] [120-400 ±10'] Linear: <6 ±0.1 6-30 ±0.2 30-120 ±0.3 120-400 ±0.5 400-1000 ±0.8 1000-2000 ±1.2 2000-4000 ±2								First Angle Proj. 			
								Page 14 of 17			



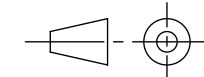




B&C Speakers

CONFIDENTIAL - ALL RIGHTS RESERVED

Reproduction or issue to third parties is not permitted without the written permission of the owner

Project: Utility12				Version: v.0		A3		Scale: 1:2		Revision: R.0	
Part name: U12_Driver-Support						Weight (Kg): 0.47		Volume (L): 0.66			
Part description: Driver support						Material: Birch Plywood 15mm					
Tolerances (ISO 2768-mK) Holes + / Shaft - : 0.2 Chamfer/Fillet/Round: [0.5-3 ±0.2] [3-6 ±0.5] [>6 ±1] Angle: [<=10 ±1°] [10-50 ±30'] [50-120 ±20'] [120-400 ±10'] Linear: <6 ±0.1 6-30 ±0.2 30-120 ±0.3 120-400 ±0.5 400-1000 ±0.8 1000-2000 ±1.2 2000-4000 ±2										First Angle Proj. 	
										Page 17 of 17	