

ME102

SPECIFICATIONS

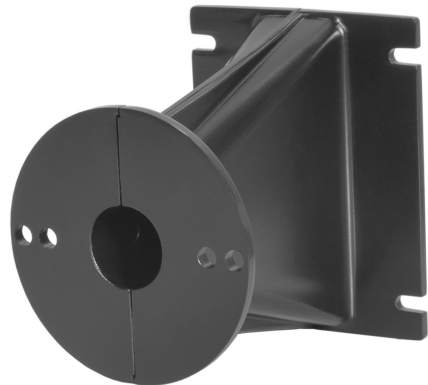
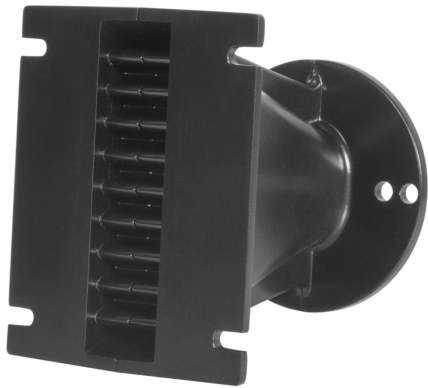
Horn mounted on B&C DE 750 compression driver.

Throat Diameter	25 mm (1 in)
Nominal Coverage Horizontal	140°
Cutoff Frequency	1 kHz
Material	Cast Aluminium
Design	Line Array Optimized Waveguide
Dimensions	110.6x87x111.6 mm (4.35x3.43x4.39 in)

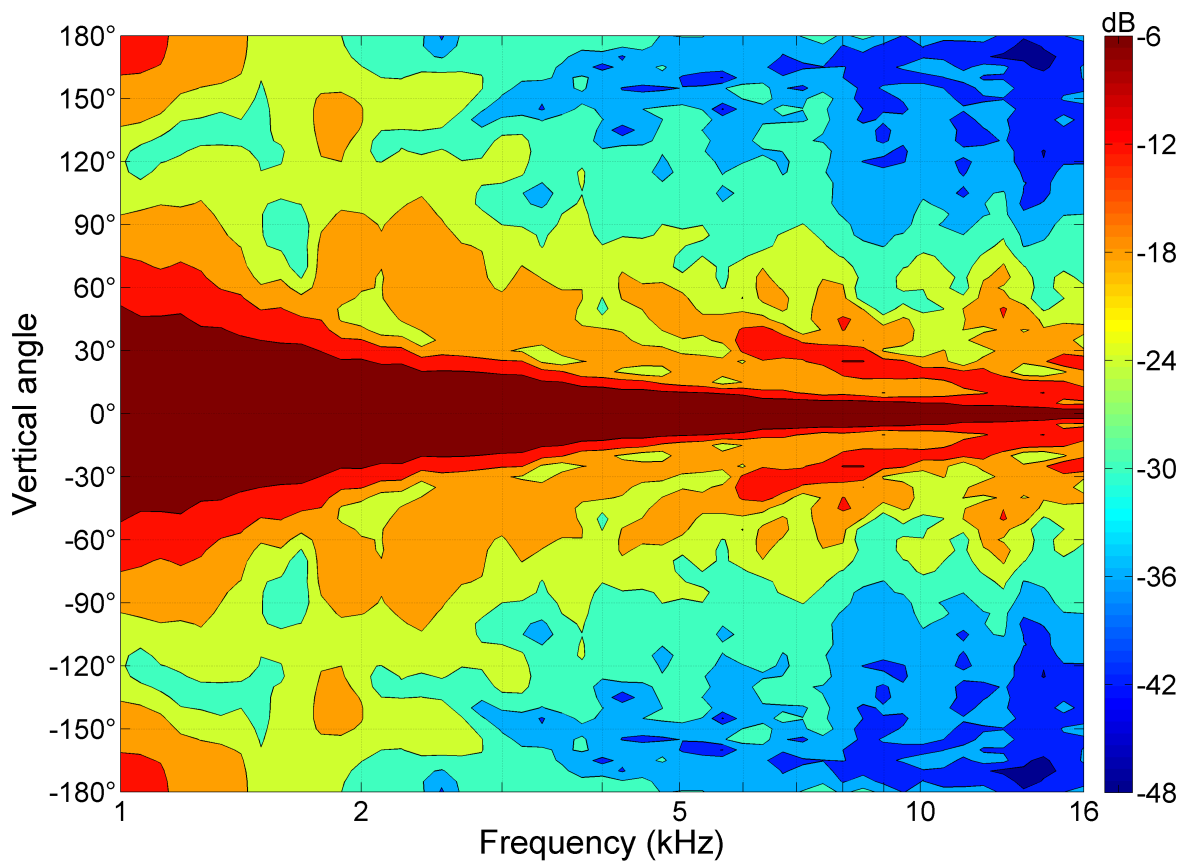
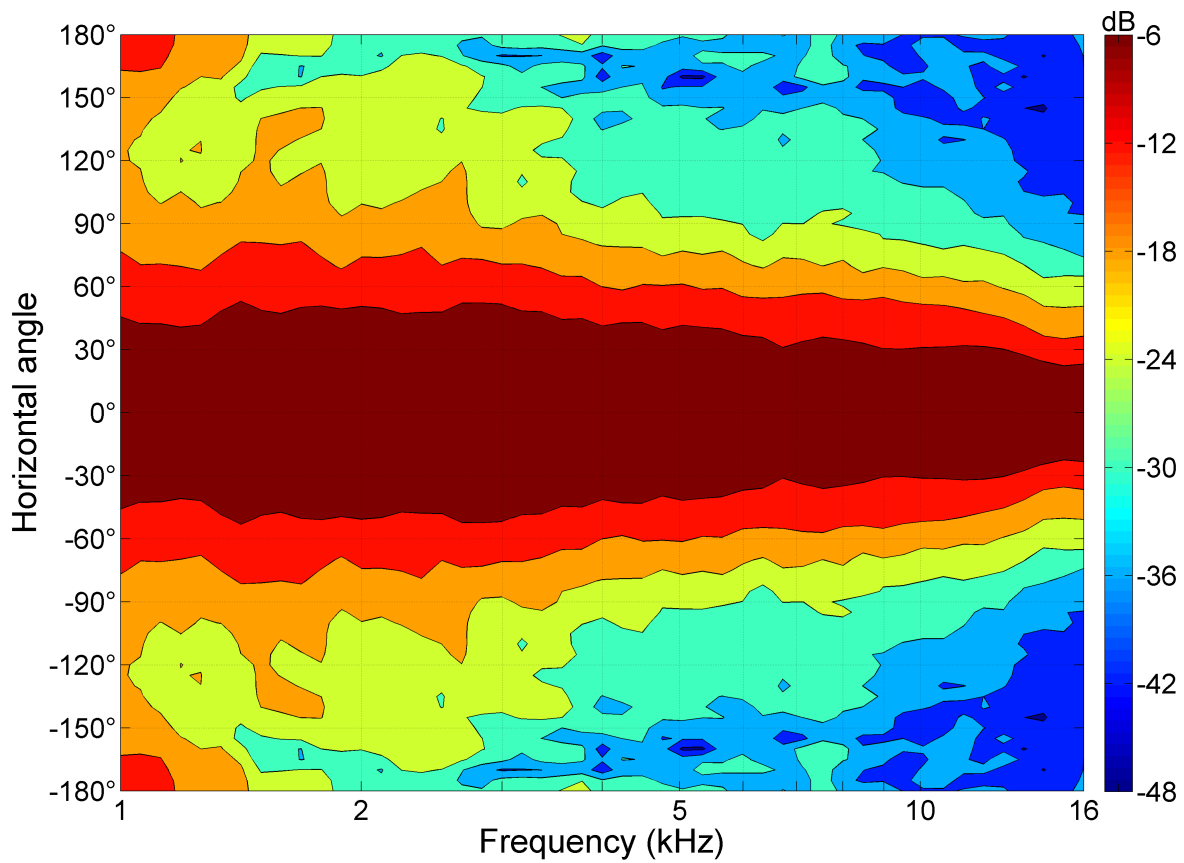
MOUNTING AND SHIPPING INFO

Baffle Cutout Dimension	102.4 mm (4.03 in)
Air Volume Occupied by Driver	0.15 dm³ (0.01 ft³)
Net Weight	0.43 kg (0.95 lb)
Shipping Units	1 pcs
Shipping Weight	0.49 kg (1.08 lb)
Shipping Box	165x165x100 mm (6.50x6.50x3.94 in)

- 1" throat entry
- Line Array optimized Waveguide
- 140° max horizontal coverage
- Vertical coverage depends on configuration
- Very good loading down to 1 kHz



ME102



ME102

