

WG7+7 4 Ω

- Line Array optimized Waveguide with DE7 HF driver and WG7 horn
- 150° max horizontal coverage
- 40 W continuous program power capacity
- 25 mm (1 in) aluminium voice coil
- Mylar diaphragm
- 2000 - 18000 Hz response
- 107 dB sensitivity
- Compact Neodymium magnet assembly
- Recommended hardware for horn mounting: two M4x18 screws, nuts, and washers.

Available exclusively with 4.8+2.8 mm fast-on terminal tab



WG7+7 4 Ω**SPECIFICATIONS HORN UNIT**

Data measured with two 8 ohm drivers in parallel connection

Nominal Impedance	4 Ω
Active Radiating Factor	94.7 %
Horizontal Coverage	150 ° Max

SPECIFICATIONS HF UNIT

Minimum Impedance	3.6 Ω
Nominal Power Handling	20 W

2 hour test made with continuous pink noise signal (6 dB crest factor) within the range from the recommended crossover frequency to 20 kHz. Power calculated on rated minimum impedance.

Continuous Power Handling	40 W
---------------------------	-------------

Power on Continuous Program is defined as 3 dB greater than the Nominal rating.

Sensitivity	107 dB
-------------	---------------

Applied RMS Voltage is set to 2 V for 4 ohm Nominal Impedance.

Frequency Range	2 kHz - 18 kHz
-----------------	-----------------------

Recommended Crossover	2 kHz
-----------------------	--------------

12 dB/oct. Or higher slope high-pass filter.

Voice Coil Diameter	25 mm (1 in)
---------------------	---------------------

Winding Material	Aluminium
------------------	------------------

Flux Density	1.65 T
--------------	---------------

Diaphragm Material	Mylar
--------------------	--------------

MOUNTING AND SHIPPING INFO

Recommended hardware for horn mounting: two M4x18 screws, nuts, and washers.

Exit Size	138x19 mm (5.43x0.75 in)
-----------	---------------------------------

Net Weight	0.49 kg (1.07 lb)
------------	--------------------------

Shipping Units	1 pcs
----------------	--------------

Shipping Weight	0.55 kg (1.2 lb)
-----------------	-------------------------

Shipping Box	150x130x90 mm (5.91x5.12x3.54 in)
--------------	------------------------------------------

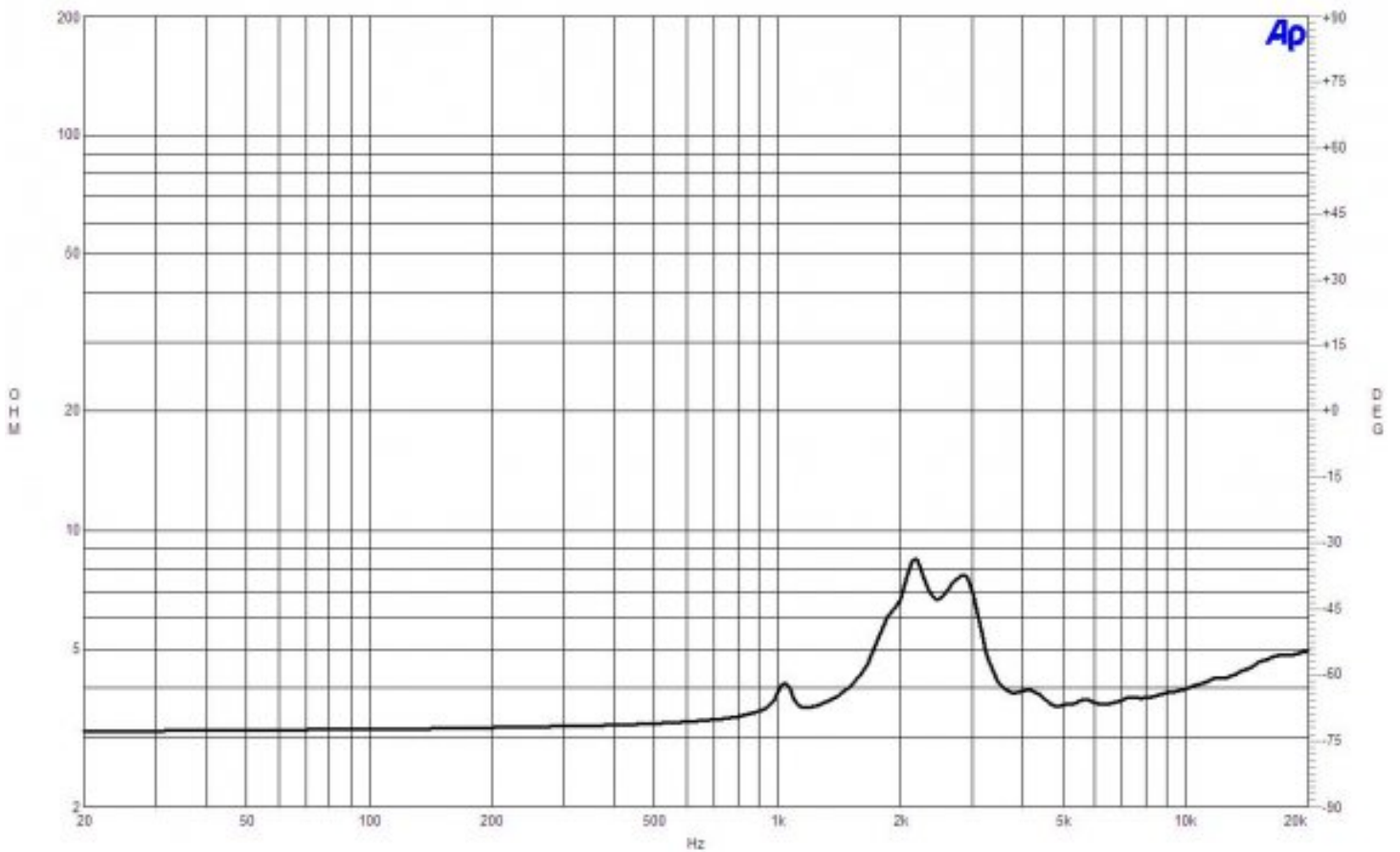
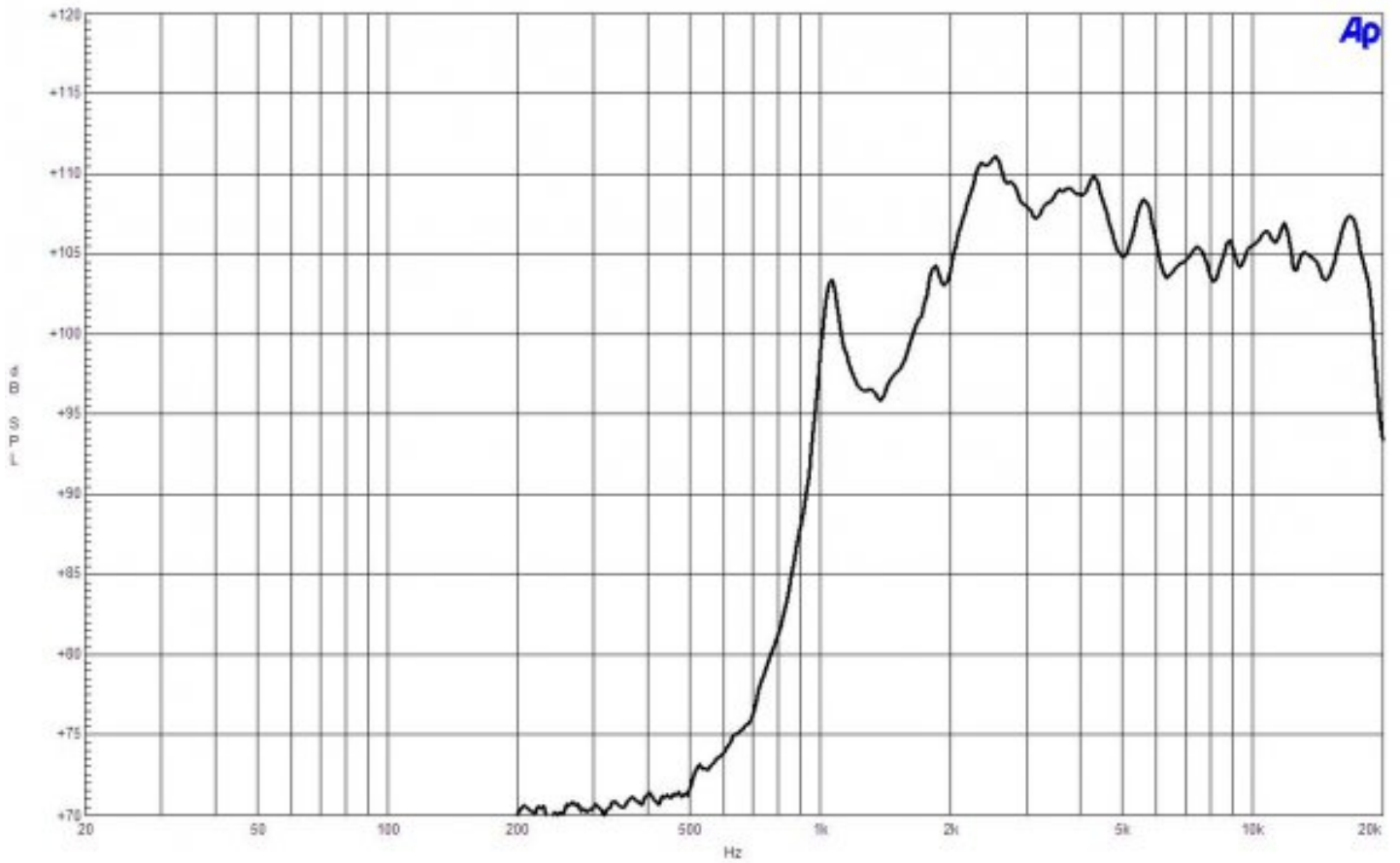
Driver Diameter	46 mm (1.8 in)
-----------------	-----------------------

Dimensions	144x114x80 mm (5.7x4.5x3.2 in)
------------	---------------------------------------

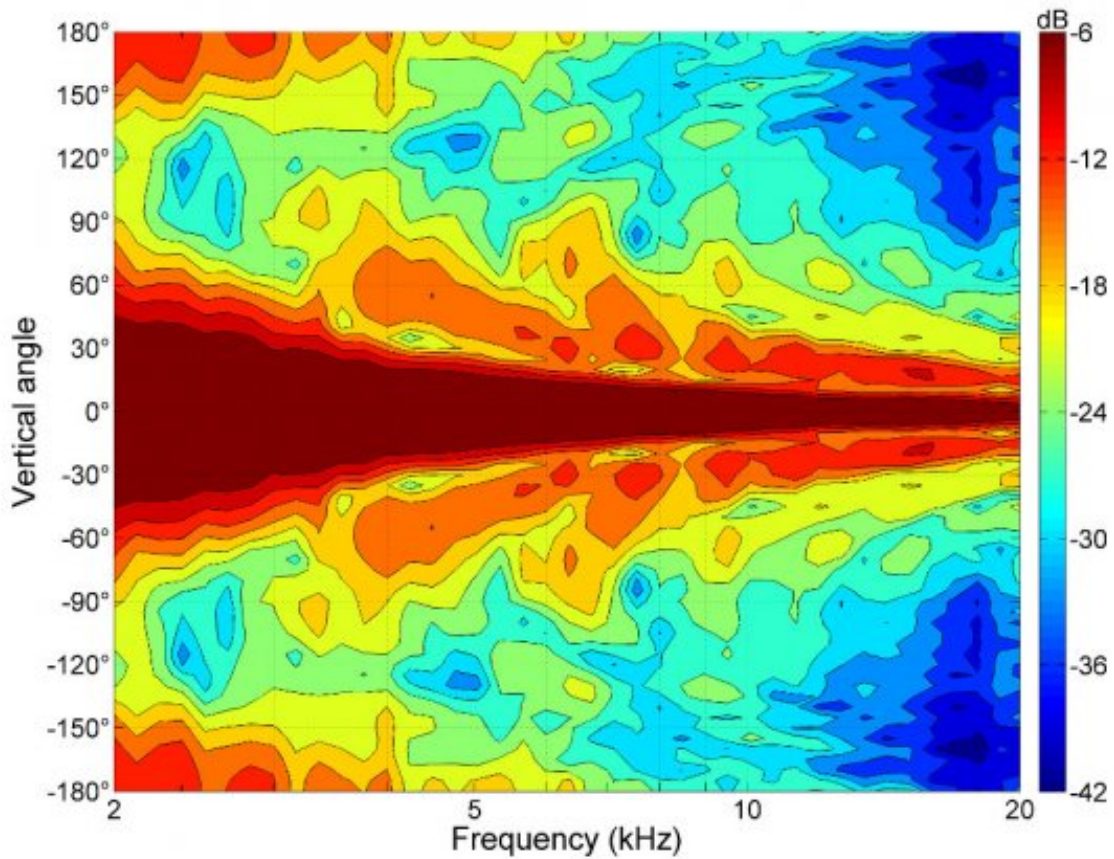
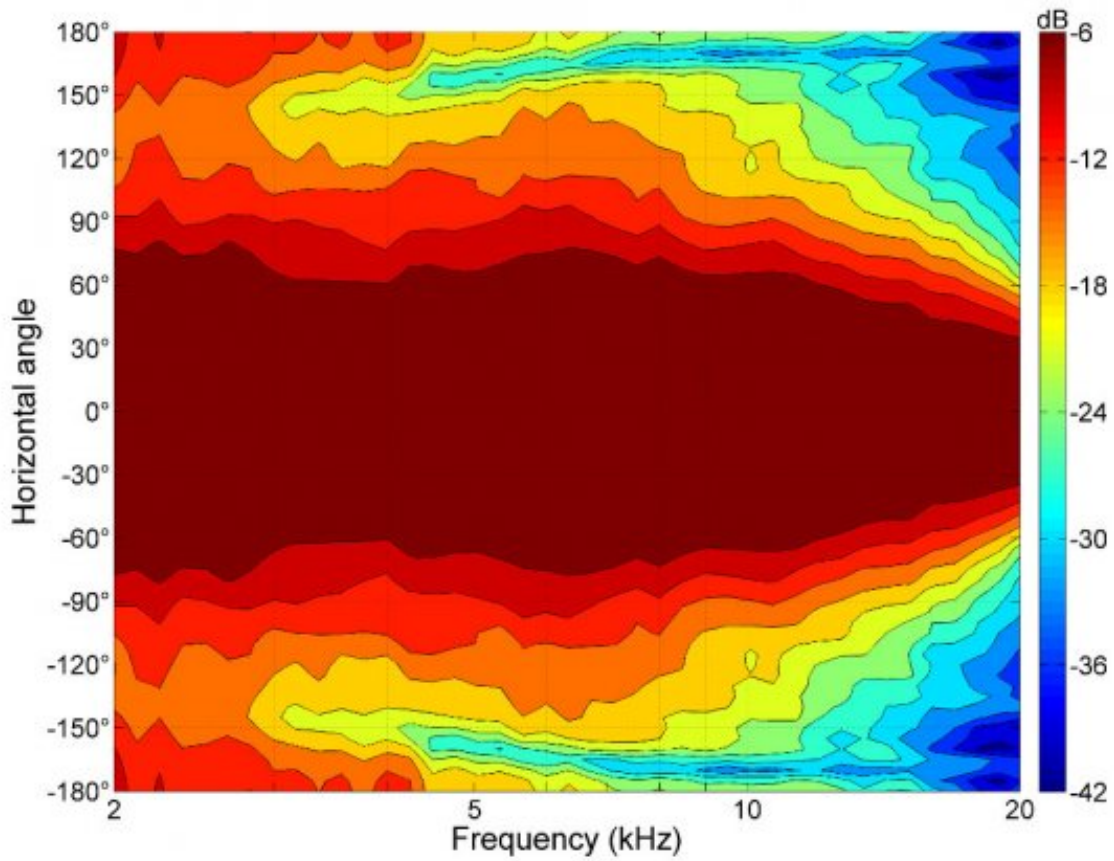
SERVICE KITS

HF replacement-diaphragm	MMDDE78
--------------------------	----------------

WG7+7 4 Ω



WG7+7 4 Ω



WG7+7 4 Ω

