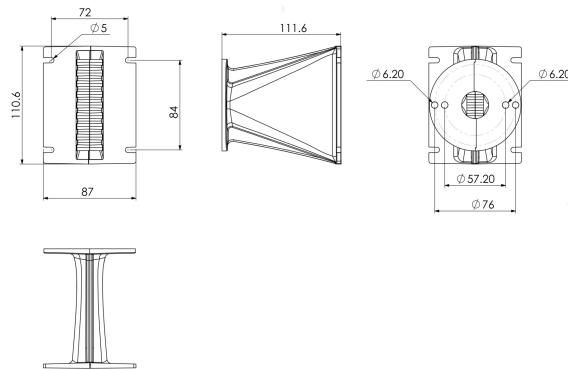
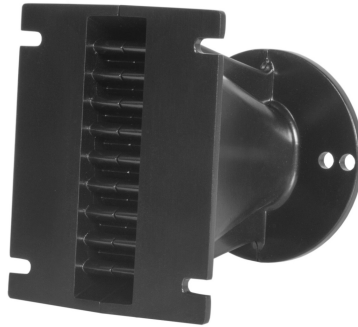
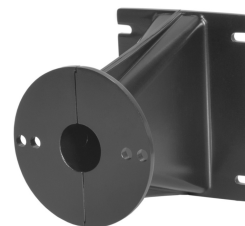


# ME102

0Ω

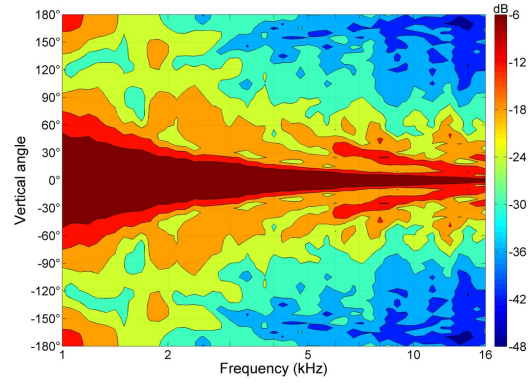
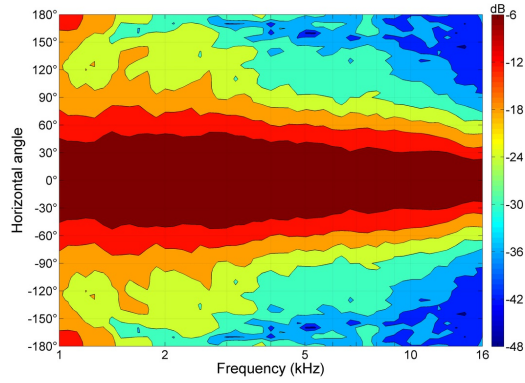
**Horns** - 1.0 Inches

- 1" throat entry
- Line Array optimized Waveguide
- 140° max horizontal coverage
- Vertical coverage depends on configuration
- Very good loading down to 1 kHz



# ME102

Horns- 1.0 Inches



## SPECIFICATIONS<sup>1</sup>

|                             |                                       |
|-----------------------------|---------------------------------------|
| Throat Diameter             | 25 mm (1.0 in)                        |
| Nominal Coverage Horizontal | 140 °                                 |
| Cutoff Frequency            | 1.0 kHz                               |
| Material                    | Cast Aluminium                        |
| Design                      | Line Array Optimized Waveguide        |
| Dimensions                  | 110.6x87x111.6 mm (4.35x3.43x4.39 in) |

## MOUNTING AND SHIPPING INFO

|                               |  |
|-------------------------------|--|
| Baffle Cutout Dimension       | 102.4x25.4 mm (4.03x1.00 in)                 |
| Air Volume Occupied by Driver | 0.15 dm <sup>3</sup> (0.01 ft <sup>3</sup> ) |
| Net Weight                    | 0.43 kg (0.95 lb)                            |
| Shipping Units                | 1  |
| Shipping Weight               | 0.49 kg (1.08 lb)                            |
| Shipping Box                  | 165x165x100 mm (6.50x6.50x3.94 in)           |

Other Details  
Two 6 mm (0.25 in) holes on 76 mm (3 in) diameter - Two 6 mm (0.25 in) holes on 57.2 mm (2.25 in) diameter

1. Waveguide mounted on B&C DE400TN compression driver