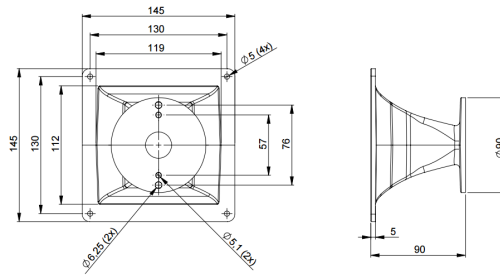


# ME20

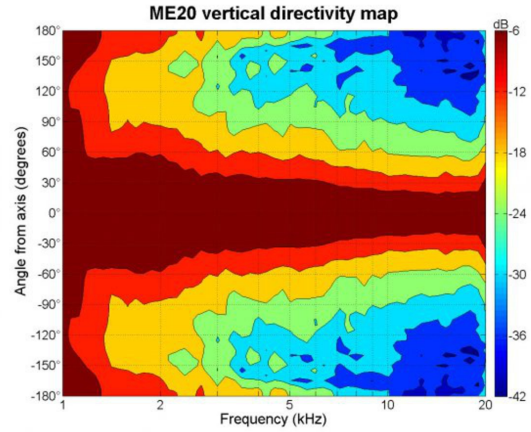
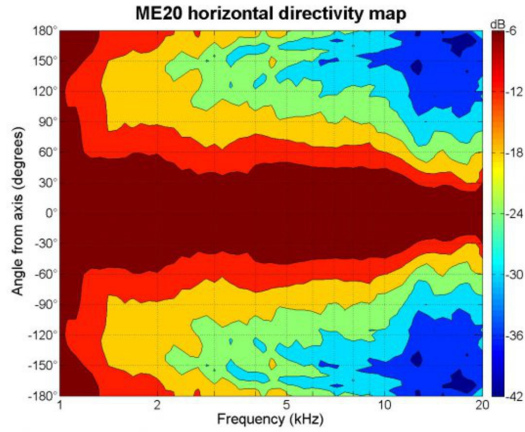
0Ω

**Horns** - 1.0 Inches

- 1" throat entry
- 90° x 60° nominal coverage
- Exponential flare
- Excellent loading down to 1.5 kHz

# ME20

Horns- 1.0 Inches



## SPECIFICATIONS<sup>1</sup>

Throat Diameter	25 mm (1.0 in)
Nominal Coverage Horizontal	90 °
Nominal Coverage Vertical	60 °
Cutoff Frequency	1.5 kHz
Material	Cast Aluminium
Dimensions	145x145x90 mm (5.7x5.7x3.6 in)

## MOUNTING AND SHIPPING INFO

Baffle Cutout Dimension	118x113 mm (4.6x4.4 in)
Air Volume Occupied by Horn	0.1 dm <sup>3</sup> (0.0 ft <sup>3</sup> )
Net Weight	0.45 kg (0.99 lb)
Shipping Units	20
Shipping Weight	12.0 kg (26.4 lb)
Shipping Box	540x350x390 mm (21.2x13.8x15.3 in)

Other Details  
2x 6.3 mm (0.25 in) holes 180° on 76 mm (3 in) diameter --- 2x 5.1 mm (0.2 in) holes 180° on 57 mm (2.24 in) diameter

1. Horn mounted on B&C DE 500 compression driver.