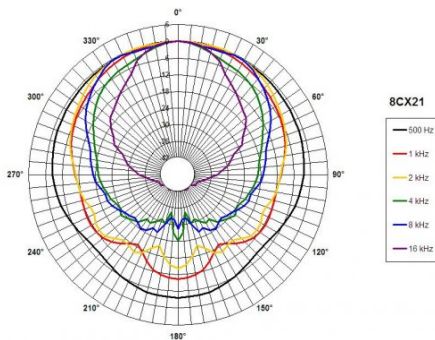
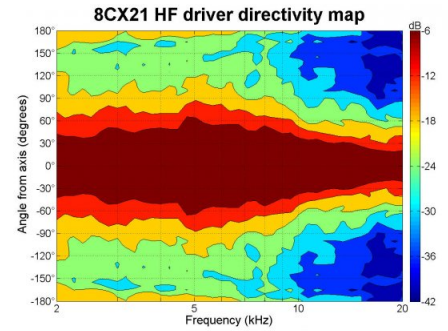
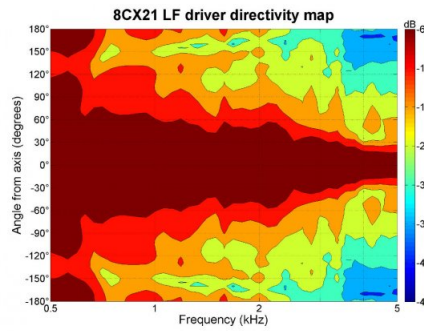
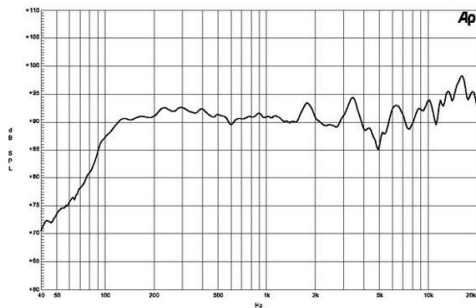
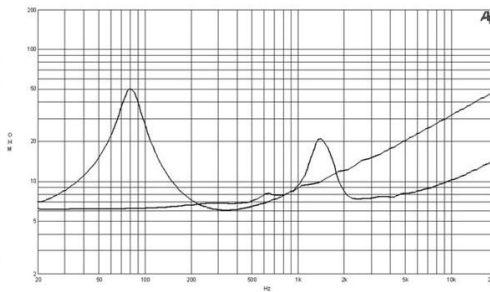
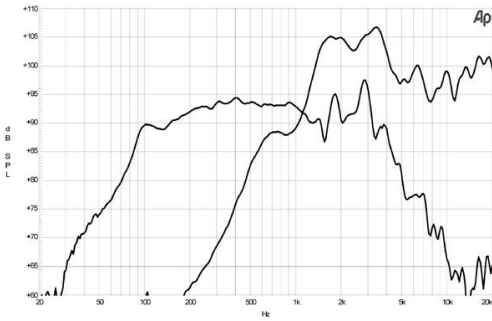




- 400 W continuous program power capacity
- 100° nominal coverage
- 75 - 20000 Hz response
- 94 dB sensitivity
- 34.5 mm (1.35") HF unit exit diameter
- FB08CX21 dedicated crossover network



GENERAL

Nominal Diameter	210 mm (8 in)
Nominal Impedance	8 Ω
Frequency Range	75 Hz - 20000 Hz
Dispersion Angle	100 ° Included by -6 dB down points.

DESIGN

Magnet Material	Ferrite
Woofer Cone Treatment	WP Waterproof Front Side

SERVICE KITS

HF replacement-diaphragm	MMD0128
LF recone-kits	RCK008CX218

CROSSOVER

FB08CX21	8Ω
----------	----

SPECIFICATIONS LF UNIT

Nominal Diameter	210 mm (8 in)
Nominal Impedance	8 Ω
Minimum Impedance	6.1 Ω
Nominal Power Handling	200 W 2 hours test made with continuous pink noise signal within the range Fs-10Fs. Power calculated on rated minimum impedance. Loudspeaker in free air.

Continuous Power Handling	400 W Power on Continuous Program is defined as 3 dB greater than the Nominal rating.
---------------------------	--

Sensitivity	94 dB Applied RMS Voltage is set to 2.83V.
-------------	---

Voice Coil Diameter	52 mm (2 in)
---------------------	--------------

Winding Material	Copper
------------------	--------

Former Material	Kapton
-----------------	--------

Winding Depth	16 mm (0.63 in)
---------------	-----------------

Magnetic Gap Depth	8 mm (0.31 in)
--------------------	----------------

Flux Density	1.1 T
--------------	-------

Woofer Cone Treatment	WP Waterproof Front Side
-----------------------	--------------------------

PARAMETERS

Fs	74 Hz
Re	5.2 Ω
Qes	0.39
Qms	4.1
Qts	0.36
Vas	15 dm ³ (0.55 ft ³)
Sd	220 cm ² (34.1 in ²)
η0	1.5 %
Xvar	5.5 mm
Mms	21 g
Bl	11.5 Tm
Le	1.2 mH
EBP	190 Hz

SPECIFICATIONS HF UNIT

Nominal Diameter	210 mm (8 in)
Nominal Impedance	8 Ω
Minimum Impedance	7.2 Ω
Nominal Power Handling	25 W 2 hour test made with continuous pink noise signal within the range from the recommended crossover frequency to 20 kHz. Power calculated on rated minimum impedance. Loudspeaker in free air.

Continuous Power Handling	50 W Power on Continuous Program is defined as 3 dB greater than the Nominal rating.
---------------------------	---

Sensitivity	101 dB Applied RMS Voltage is set to 2.83V.
-------------	--

Recommended Crossover	2.2 kHz 12 dB/oct. or higher slope high-pass filter.
-----------------------	---

Voice Coil Diameter	36 mm (1.4 in)
---------------------	----------------

Winding Material	Aluminium
------------------	-----------

Inductance	0.14 mH
------------	---------

Flux Density	1.45 T
--------------	--------

Diaphragm Material	Polyester
--------------------	-----------

MOUNTING AND SHIPPING INFO

Overall Diameter	225 mm (8.8 in)
Bolt Circle Diameter	210 mm (8.3 in)
Baffle Cutout Diameter	187 mm (7.4 in)
Depth	135 mm (5.3 in)
Flange and Gasket Thickness	11 mm (0.4 in)
Net Weight	4.1 kg (9.04 lb)
Shipping Units	1 pcs
Shipping Weight	4.7 kg (10.36 lb)
Shipping Box	295x314x175 mm (11.61x12.36x6.89 in)