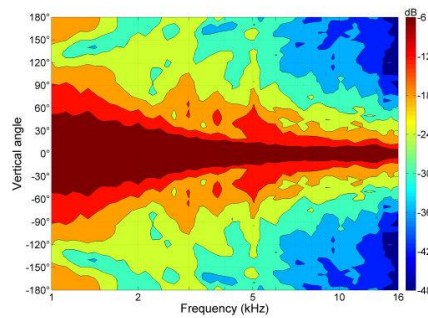
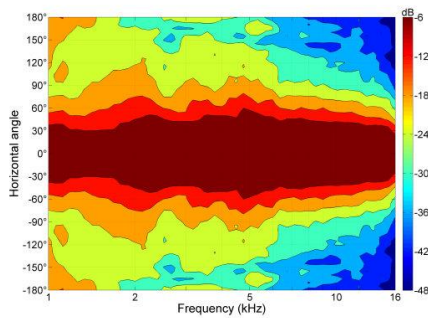
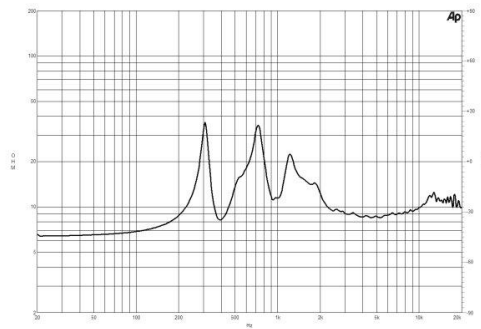
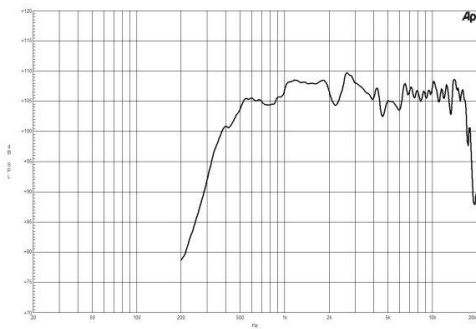


- Line Array optimized Waveguide with DE800 driver
- 120° max horizontal coverage
- 220 W continuous program power capacity
- 75 mm (3 in) aluminium voice coil
- Composite Polyimide/Titanium diaphragm
- 500 - 17000 Hz response
- 108 dB sensitivity
- Neodymium magnet assembly with shorting copper cap

Wave guide horn not sold separately



## SPECIFICATIONS HORN UNIT

Waveguide mounted on 90°x10° bell horn

Nominal Impedance	8 Ω
Active Radiating Factor	93.7 %
Horizontal Coverage	120 ° Max

## SERVICE KITS

HF replacement-diaphragm	MMD8008M
--------------------------	----------

## SPECIFICATIONS HF UNIT

Minimum Impedance	8.6 Ω
Nominal Power Handling	110 W 2 hour test made with continuous pink noise signal (6 dB crest factor) within the range from the recommended crossover frequency to 20 kHz. Power calculated on rated minimum impedance.
Continuous Power Handling	220 W Power on Continuous Program is defined as 3 dB greater than the Nominal rating.
Sensitivity	108 dB Applied RMS Voltage is set to 2.83 V for 8 ohms Nominal Impedance.
Frequency Range	1 kHz - 17 kHz
Recommended Crossover	0.8 kHz 12 dB/oct. Or higher slope high-pass filter.
Voice Coil Diameter	75 mm (3 in)
Winding Material	Aluminium
Flux Density	1.85 T
Diaphragm Material	Composite Polyimide/Titanium

## MOUNTING AND SHIPPING INFO

Exit Size	153x25 mm (6x1 in)
Net Weight	3.2 kg (7.05 lb)
Shipping Units	1 pcs
Shipping Weight	3.3 kg (7.28 lb)
Shipping Box	245x140x175 mm (9.65x5.51x6.89 in)
Driver Diameter	124 mm (4.9 in)
Dimensions	163x130x235 mm (6.4x5.1x9.3 in)