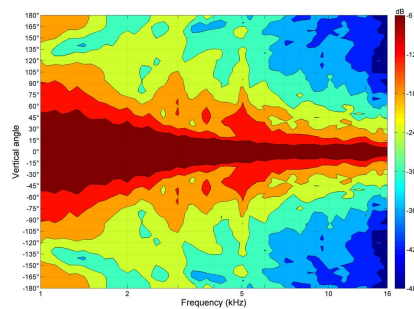
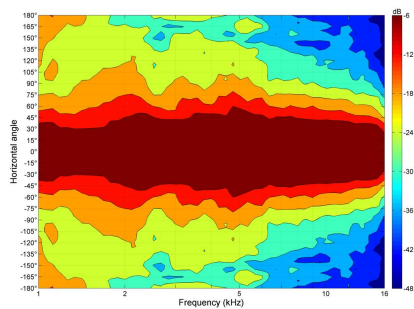
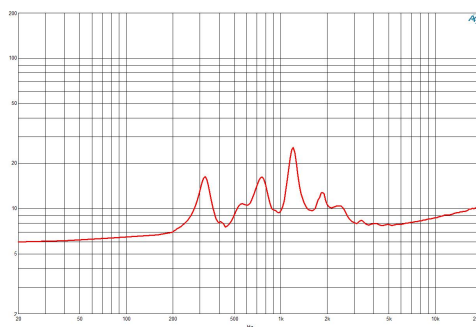
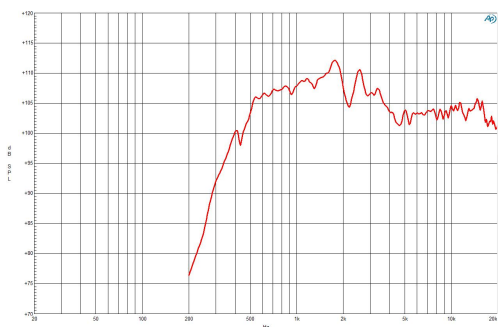


- Line Array optimized Waveguide with DE990TN driver
- 120° max horizontal coverage
- 200 W continuous program power capacity
- 86 mm (3.4 in) CCAW voice coil
- Titanium diaphragm
- 500 - 18000 Hz response
- 107.5 dB sensitivity
- Neodymium magnet assembly with shorting copper cap

Wave guide horn not sold separately



## SPECIFICATIONS HORN UNIT

Waveguide mounted on 90°x10° bell horn

Nominal Impedance	8 $\Omega$
Active Radiating Factor	93.7 %
Horizontal Coverage	120 ° Max

## SERVICE KITS

HF replacement-diaphragm	MMD35ETN8M
--------------------------	------------

## SPECIFICATIONS HF UNIT

Minimum Impedance	7.8 $\Omega$
Nominal Power Handling	100 W <small>2 hour test made with continuous pink noise signal (6 dB crest factor) within the range from the recommended crossover frequency to 20 kHz. Power calculated on rated minimum impedance.</small>
Continuous Power Handling	200 W <small>Power on Continuous Program is defined as 3 dB greater than the Nominal rating.</small>
Sensitivity	107.5 dB <small>Applied RMS Voltage is set to 2.83 V for 8 ohms Nominal Impedance.</small>
Frequency Range	500 kHz - 18 kHz
Recommended Crossover	1 kHz <small>12 dB/oct. Or higher slope high-pass filter.</small>
Voice Coil Diameter	86 mm (3.4 in)
Winding Material	CCAW
Flux Density	1.9 T
Diaphragm Material	Titanium

## MOUNTING AND SHIPPING INFO

Exit Size	153x25 mm (6x1 in)
Net Weight	2.95 kg (6.5 lb)
Shipping Units	1 pcs
Shipping Weight	3.05 kg (6.72 lb)
Shipping Box	245x140x175 mm (9.6x5.5x6.9 in)
Driver Diameter	115 mm (4.53 in)
Dimensions	163x130x243 mm (6.42x5.12x9.57 in)